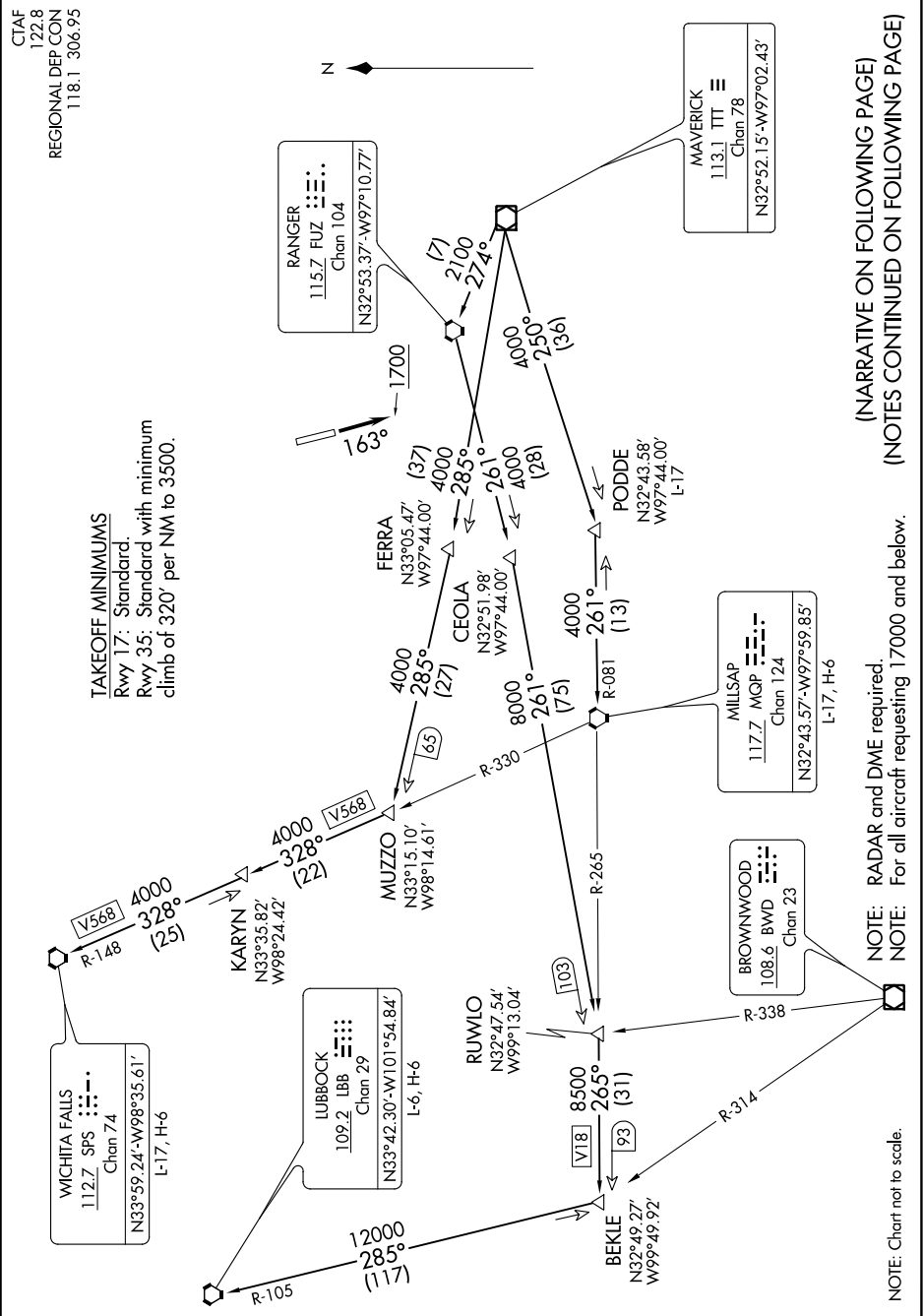


SC-2, 31 DEC 2020 to 28 JAN 2021



(NARRATIVE ON FOLLOWING PAGE)
(NOTES CONTINUED ON FOLLOWING PAGE)

NOTE: RADAR and DME required.
NOTE: For all aircraft requesting 17000 and below.

SC-2, 31 DEC 2020 to 28 JAN 2021