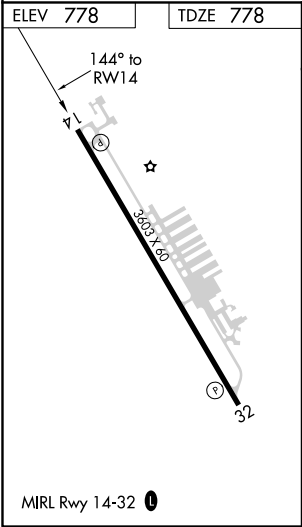
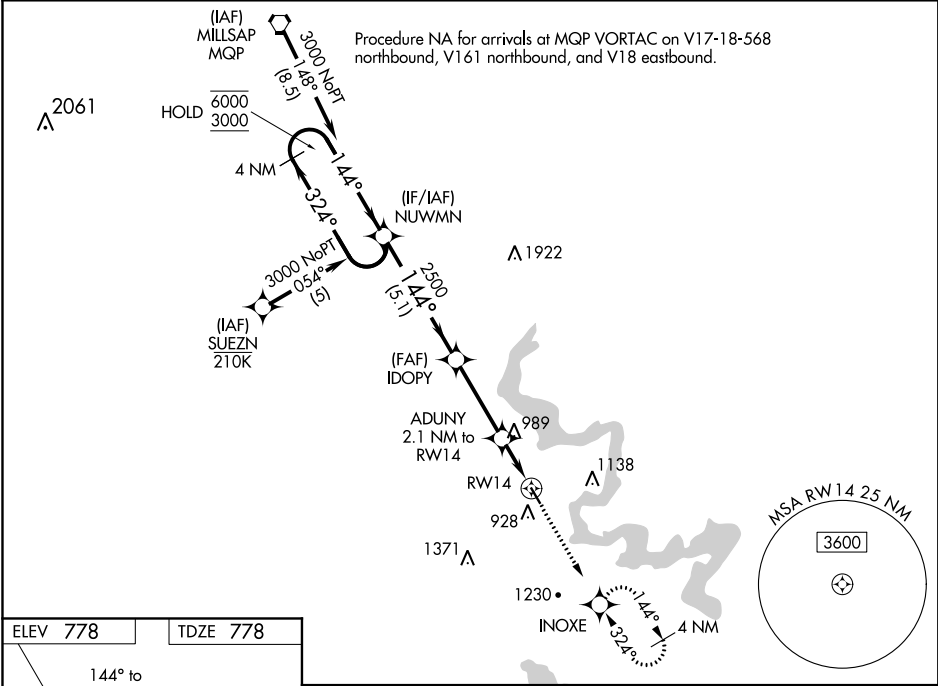


WAAS CH 99618 W14A	APP CRS 144°	Rwy Idg 3603 TDZE 778 Apt Elev 778
--	------------------------	---

RNAV (GPS) RWY 14

GRANBURY RGNL (GDJ)

RNP APCH.		MISSED APPROACH: Climb to 2700 direct INOXE and hold, continue climb-in-hold to 2700.
<div><div></div><div></div></div>	Circling Rwy 32 NA at night. For uncompensated Baro-VNAV systems, LNAV/VNAV NA below -16°C or above 54°C.	
AWOS-3 118.925	FORT WORTH CENTER 127.15 314.0	UNICOM 123.0 (CTAF) 0



4 NM Holding Pattern		NUWMN	IDOPY	ADUNY 2.1 NM to RW14	INOXE
6000 ← 324°		2500	2500	*1.6 NM to RW14	*LNAV only
3000 → 144°		2500	2500	1.6	
GP 3.00° TCH 30		5.1 NM	3.3 NM	0.5	
CATEGORY	A	B	C	D	
LPV DA	1036-¾ 258 (300-¾)			NA	
LNAV/VNAV DA	1109-1 331 (400-1)			NA	
LNAV MDA	1300-1	522 (600-1)	1300-1½ 522 (600-1½)	NA	
CIRCLING	1340-1 562 (600-1)	1380-1 602 (700-1)	1440-1¾ 662 (700-1¾)	NA	

SC-2, 31 DEC 2020 to 28 JAN 2021

SC-2, 31 DEC 2020 to 28 JAN 2021