

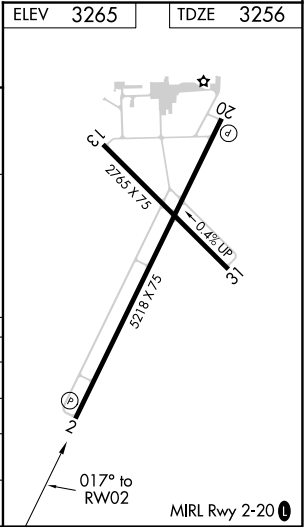
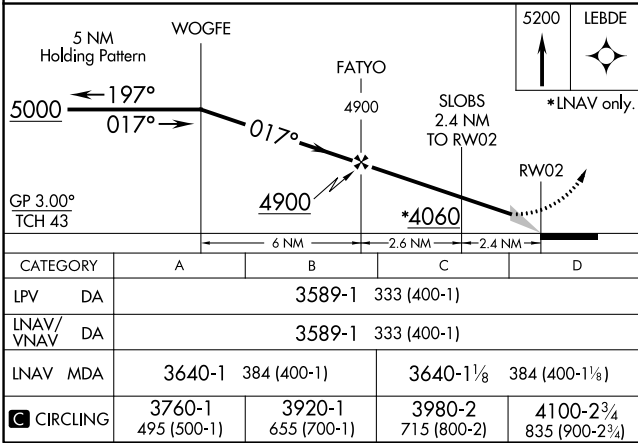
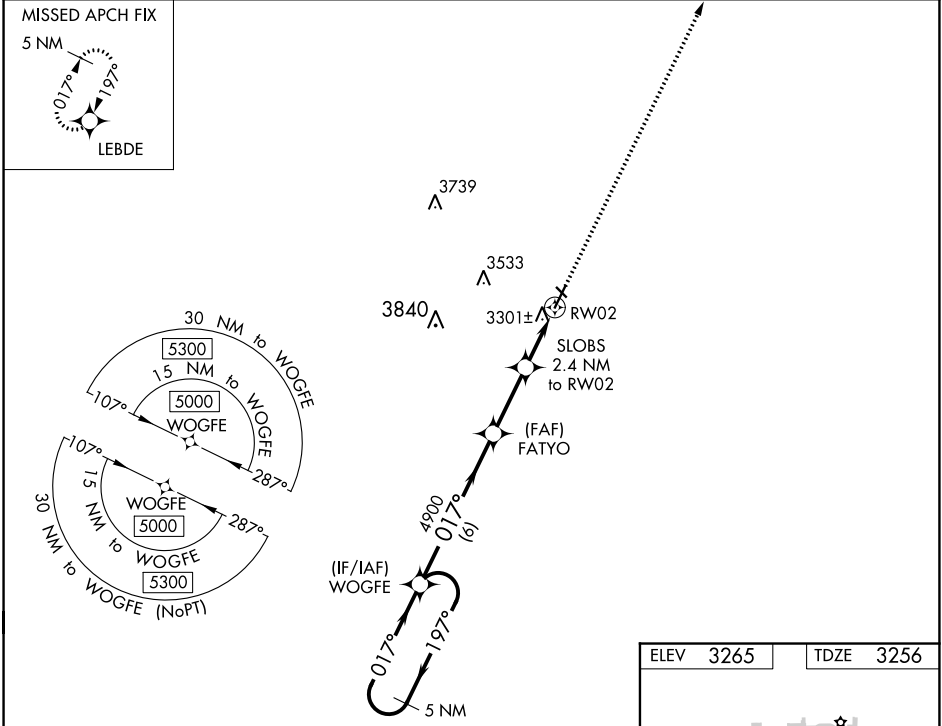
WAAS CH <b>50441</b> <b>W02A</b>	APP CRS <b>017°</b>	Rwy Idg TDZE Apt Elev	<b>5218</b> <b>3256</b> <b>3265</b>
--	------------------------	-----------------------------	---

RNAV (GPS) RWY 2  
TERRY COUNTY (BFE)

**Baro-VNAV NA.** Circling Rwy 13, 31 NA at night. DME/DME RNP-0.3 NA. Use Lubbock altimeter setting. When not received, use Seminole altimeter setting and increase LPV DA to 3600; increase LNAV/VNAV DA to 3600; and increase all MDA 20 feet.

**MISSED APPROACH:** Climb to 5200 direct LEBDE and hold.

LBB ASOS <b>125.3</b>	LUBBOCK APP CON <b>119.2 351.8</b>	UNICOM <b>122.8 (CTAF) 0</b>
--------------------------	---------------------------------------	---------------------------------



SC-2, 31 DEC 2020 to 28 JAN 2021

SC-2, 31 DEC 2020 to 28 JAN 2021