

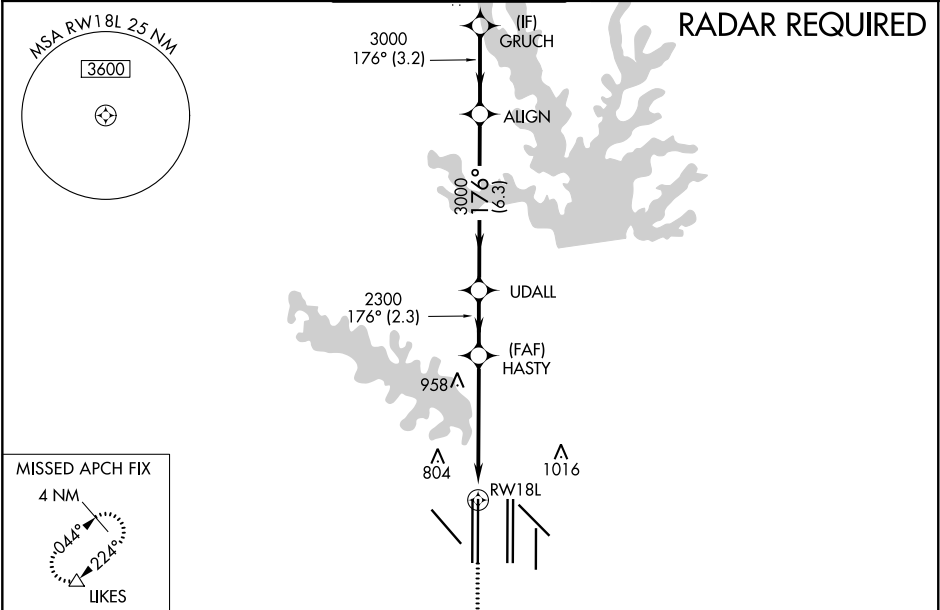
WAAS CH 86807 W18A	APP CRS 176°	Rwy Idg 13401 TDZE 602 Apt Elev 607	RNAV (GPS) RWY 18L DALLAS-FORT WORTH INTL (DFW)
--	------------------------	--	---

▼ For uncompensated Baro-VNAV systems, LNAV/VNAV NA Below -4°C (25°F) or above 54°C (130°F). For inop MALS, increase LNAV Cats C and D visibility to 1¾. Simultaneous approach authorized with Rwy 17L/C/R. DME/DME RNP-0.3 NA. LNAV procedure NA during simultaneous operations. Use of FD or AP providing RNAV track guidance required during simultaneous operations.

MALS

MISSED APPROACH: Climb to 1100, then climbing right turn to 3000 direct **LIKES** and hold.

D-ATIS ARR 123.775 DEP 135.925	REGIONAL APP CON 118.425	DFW TOWER 126.55 127.5 EAST 124.15 134.9 WEST	GND CON 121.65 121.8 EAST 121.85 WEST	CLNC DEL 128.25	CPDLC
--	------------------------------------	---	---	---------------------------	-------



ELEV 607

D

TDZE 602

176° to RW18L

HIRL all Rwys

REIL Rwys 13L and 31L

TDZ/CL all Rwys except 13L and 31L

1100

3000

LIKES

△

VGSI and RNAV glidepath not coincident (VGSI Angle 3.00/TCH 70).

*LNAV only.

1.7 NM to RWY 18L

RW18L

1.7 NM

3.5 NM

2.3 NM

6.3 NM

3.2 NM

GRUCH

ALIGN

UDALL

HASTY

2300

3000

3000

176°

4000

GP 3.00°

TCH 55

CATEGORY	A	B	C	D
LPV DA	802/18		200 (200-½)	
LNAV/VNAV DA	980/40		378 (400-¾)	
LNAV MDA	1220/24 618 (700-½)		1220-1⅞ 618 (700-1⅞)	