

WAAS CH 4000B W17B	APP CRS 176°	Rwy Idg TDZE Apt Elev	8500 545 607
--	------------------------	-----------------------------	---

RNAV (GPS) RWY 17L

DALLAS-FORT WORTH INTL (DFW)

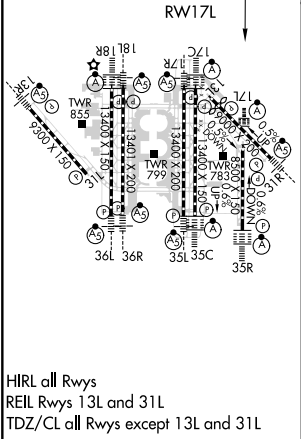
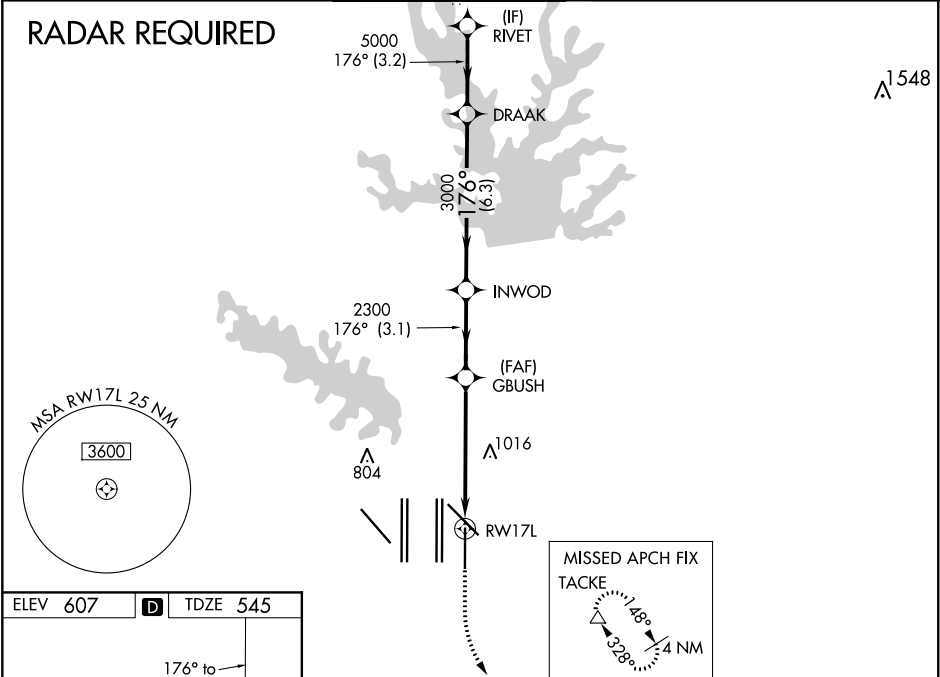
⚠

For uncompensated Baro-VNAV systems, LNAV/VNAV NA below -5°C (23°F) or above 54°C (130°F). DME/DME RNP-0.3 NA. Simultaneous approach authorized with Rwy 17C/R and Rwy 18L/R. LNAV procedure NA during simultaneous operations. Use of FD or AP providing RNAV track guidance required during simultaneous operations.

ALSF-2

MISSED APPROACH: Climb to 1020 then climbing left turn to 3000 direct TACKE and hold.

D-ATIS ARR 123.775 DEP 135.925	REGIONAL APP CON 119.4	DFW TOWER 126.55 127.5 EAST 124.15 134.9 WEST	GND CON 121.65 121.8 EAST 121.85 WEST	CLNC DEL 128.25	CPDLC
--	----------------------------------	---	---	---------------------------	-------



1020	3000	TACKE	VGSI and RNAV glidepath not coincident (VGSI Angle 3.00/TCH 77).			
*LNAV only.			GBUSH	INWOD	DRAAK	RIVET
			2300	3000	5000	5000
			2300			GP 3.00° TCH 56
CATEGORY	A		B		C	D
LPV DA	745/18		200 (200-½)			
LNAV/ VNAV DA	1063/60		518 (500-1¼)			
LNAV MDA	1240/24	695 (700-½)	1240-1½		695 (700-1½)	