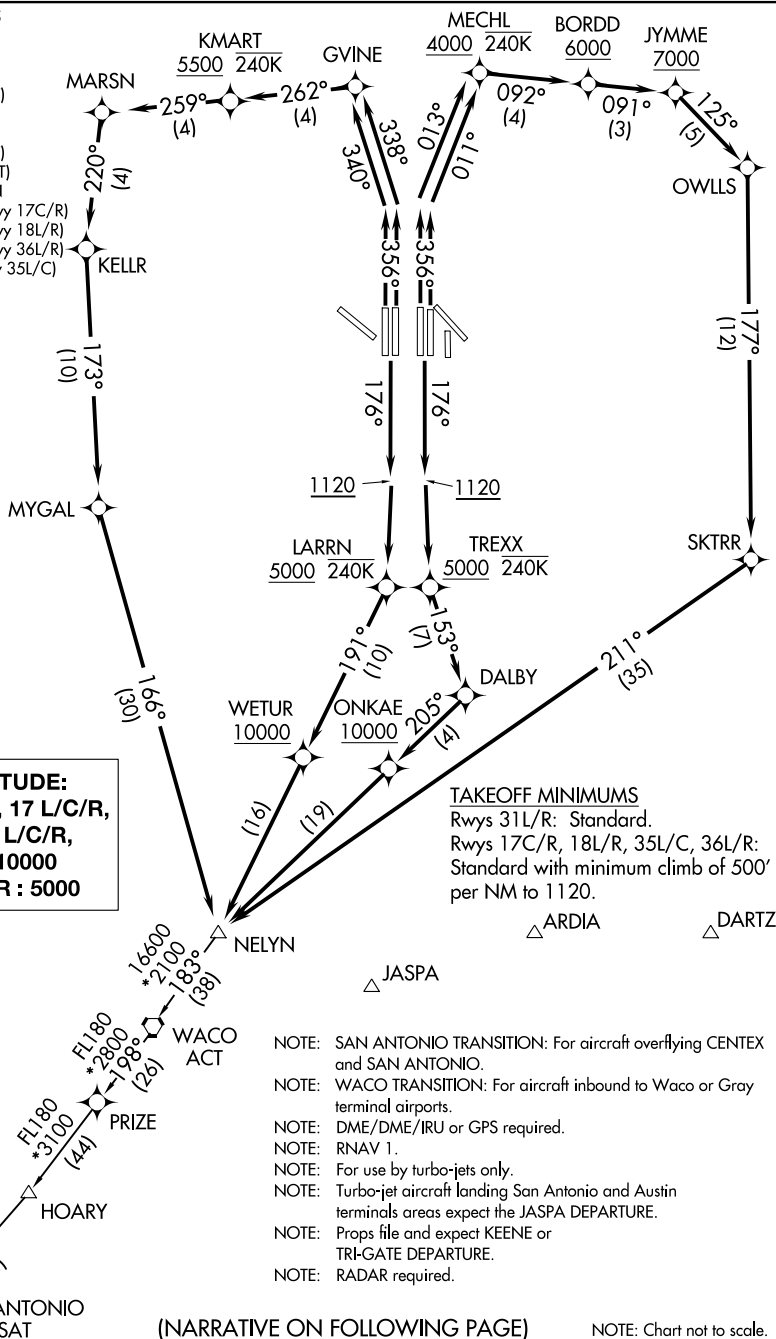


DALLAS-FORT WORTH INTL (DFW)

## DALLAS-FORT WORTH, TEXAS

REGIONAL DEP CON  
125.125 353.95 (Rwy 17C/I)  
125.125 353.95 (Rwy 18L/R)  
126.475 363.15 (Rwy 36L/R)  
118.55 290.35 (Rwy 35L/C)



**TOP ALTITUDE:**  
RWYS 13 L/R, 17 L/C/R,  
18 L/R, 35 L/C/R,  
36 L/R : 10000  
RWY 31 L/R : 5000

## TAKEOFF MINIMUMS

Rwys 31 L/R: Standard.

Rwys 17C/R, 18L/R, 35L/C, 36L/R:  
Standard with minimum climb of 500  
per NM to 1120.

NOTE: SAN ANTONIO TRANSITION: For aircraft overflying CENTEX and SAN ANTONIO.

NOTE: WACO TRANSITION: For aircraft inbound to Waco or Gray terminal airports.

NOTE: DME/DME/IRU or GPS required.

NOTE: RNAV 1.

NOTE: For use by turbo-jets only.

NOTE: Turbo-jet aircraft landing San Antonio and Austin terminals areas expect the JASPA DEPARTURE.

NOTE: Props file and expect KEENE or TRI-GATE DEPARTURE.

NOTE: RADAR required.

NOTE: Chart not to scale.

## DALLAS-FORT WORTH, TEXAS

DALLAS-FORT WORTH INTL (DFW)