

LOC/DME I-BXN	APP CRS	Rwy 36L Idg	Rwy 36R Idg
111.9	356°	13400	13401
Chan 56		588	581
		607	607
		TDZE	TDZE
		Apt Elev	Apt Elev

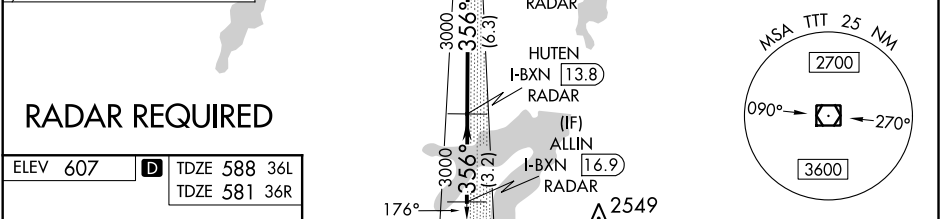
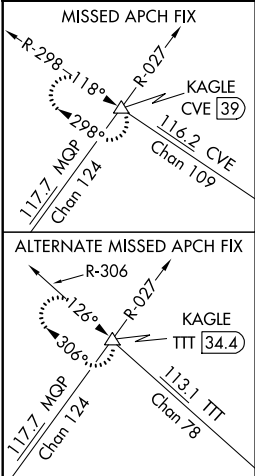
ILS or LOC RWY 36L
DALLAS-FORT WORTH INTL (DFW)

⚠ Inop table does not apply to Sidestep 36R. Simultaneous approach authorized with Rwy 35L/C/R. DME or RADAR required. For inop ALS, increase S-LOC 36L Cat C and D visibility to 1 3/4 SM. For inop ALS, increase CIRIS fix minimums Cat C and D visibility to RVR 4500.

Rwys 36L/R
MALSR

MISSED APPROACH: Climb to 1100 then climbing left turn to 3000 on heading 315° and CVE VOR/DME R-298 to KAGLE INT/ CVE VOR/DME 39 DME and hold.

D-ATIS	REGIONAL APP CON	DFW TOWER	GND CON	CLNC DEL	CPDLC
ARR 123.775 DEP 135.925	118.425	126.55 127.5 EAST 124.15 134.9 WEST	121.65 121.8 EAST 121.85 WEST	128.25	



ELEV 607 **D** TDZE 588 36L
TDZE 581 36R

HIRL all Rwys
REIL Rwys 13L and 31L
TDZ/CL all Rwys except 13L and 31L

FAF to MAP 5.2 NM

Knots	60	90	120	150	180
Min:Sec	5:12	3:28	2:36	2:05	1:44

CATEGORY	A	B	C	D
S-ILS 36L	788/18 200 (200-1/2)			
S-LOC 36L	1080/24	492 (500-1/2)	1080/50	492 (500-1)
SIDESTEP 36R	1080/50	499 (500-1)	1080-1 1/2	499 (500-1 1/2)
CIRIS FIX MINIMUMS (DME required)				
S-LOC 36L	880/24 292 (300-1/2)			

SC-2, 31 DEC 2020 to 28 JAN 2021

SC-2, 31 DEC 2020 to 28 JAN 2021