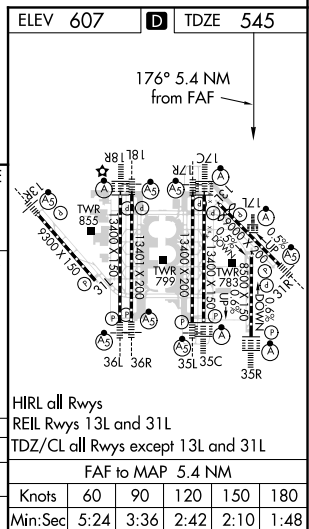


ILS or LOC RWY 17L
DALLAS-FORT WORTH INTL (DFW)

MISSED APPROACH: Climb to 1020 then climbing left turn to 3000 on heading 151° and TTT VOR/DME R-127 to TACKE/TTT 26.5 DME and hold.



DALLAS-FORT WORTH INTL (DFW)
ILS or LOC RWY 17L