

LOC/DME I-RRR 110.9 Chan 46	APP CRS 311°	Rwy Idg 8373 TDZE 523 Apt Elev 607
---	------------------------	---

ILS RWY 31R (SA CAT I & CAT II)
DALLAS-FORT WORTH INTL (DFW)

Simultaneous approach authorized. DME required.
SA Cat I: Requires specific OPSPEC, MSPEC, or LOA approval and use of HUD to DH. SA Cat II: Reduced lighting: Requires specific OPSPEC, MSPEC, or LOA approval and use of autoland or HUD to touchdown.

MALSR

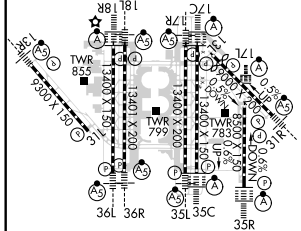
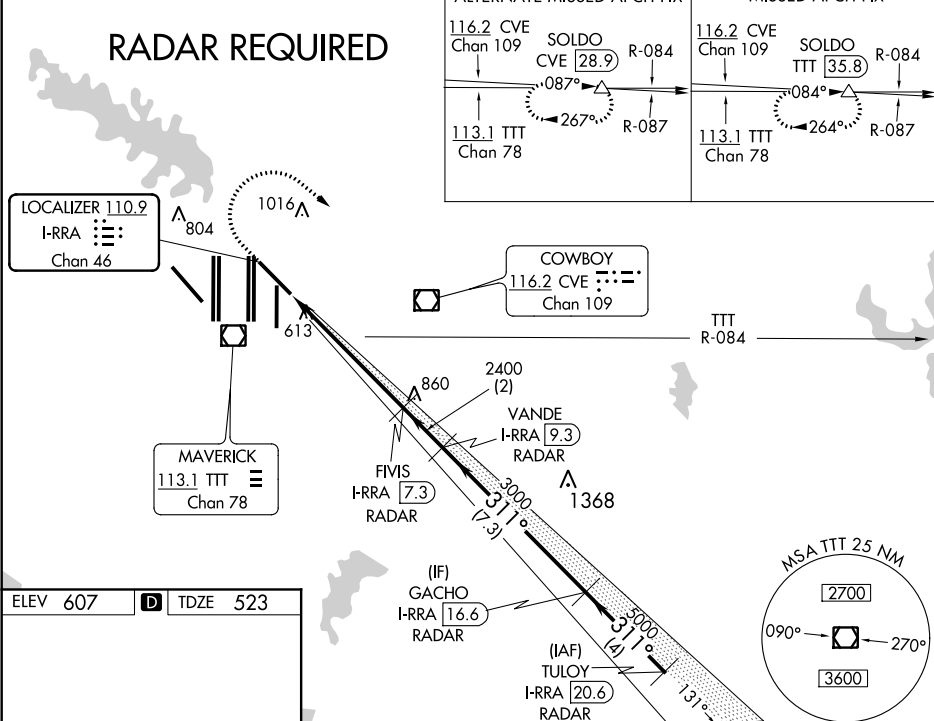
MISSED APPROACH: Climb to 1100 then climbing right turn to 3000 on heading 125° and TTT VOR/DME R-084 to SOLDI/TTT 35.8 DME and hold.

ARR	123.775	REGIONAL APP CON	126.55	127.5	EAST	121.65	121.8	EAST	CINC DEL	CPDLC
DEP	135.925	135.5	125.2	124.15	134.9	WEST	121.85	WEST	128.25	

RADAR REQUIRED

ALTERNATE MISSED APCH FIX

MISSED APCH FIX



HIRL all Rwys
REIL Rwys 13L and 31L
TDZ/CL all Rwys except 13L and 31L

CATEGORY	A	B	C	D
S-ILS 31R	SA CAT I	RA 176/14	150 DA 673	
S-ILS 31R	SA CAT II	RA 121/12	100 DA 623	

SA CATEGORY I & II ILS SPECIAL AIRCREW
& AIRCRAFT CERTIFICATION REQUIRED