

LOC/DME I-VYIN 111.9 Chan 56	APP CRS 176°	Rwy Idg TDZE Apt Elev 13400 607 607	ILS RWY 18R (CAT II & III) DALLAS-FORT WORTH INTL (DFW)	
--	------------------------	---	---	--

⚠

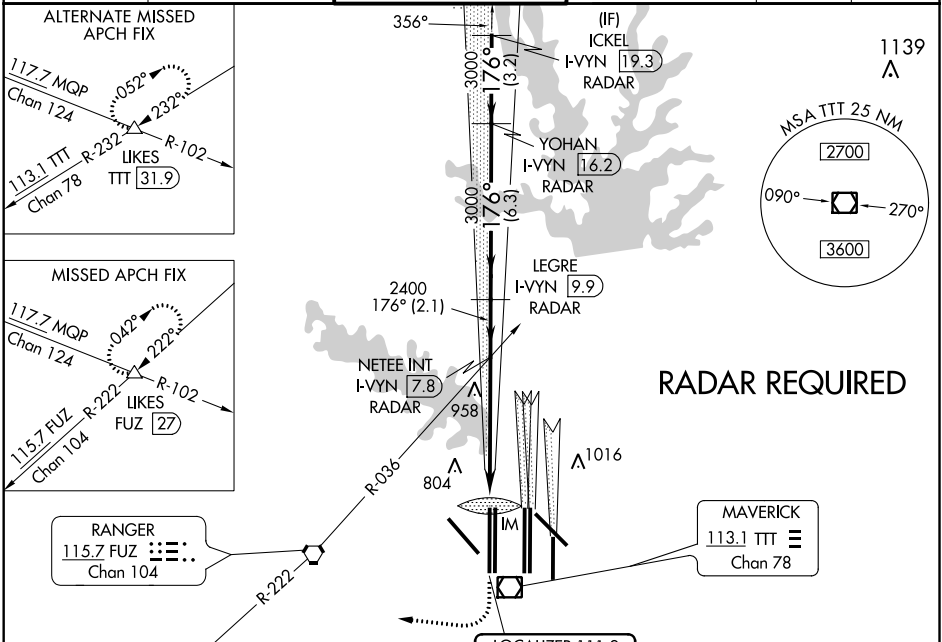
DME or RADAR required. Simultaneous approach authorized with Rwy 17 L/C/R.

ALSIF-2

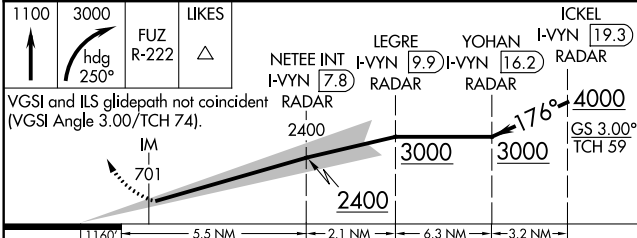
MISSED APPROACH:

Climb to 1100 then climbing right turn to 3000 on heading 250° and FUZ VORTAC R-222 to LIKES INT/FUZ VORTAC 27 DME and hold.

D-ATIS ARR 123.775 DEP 135.925	REGIONAL APP CON 118.425	DFW TOWER 126.55 127.5 EAST 124.15 134.9 WEST	GND CON 121.65 121.8 EAST 121.85 WEST	CLNC DEL 128.25	CPDLC
--	------------------------------------	---	---	---------------------------	-------



ELEV 607	D	TDZE 607
-----------------	----------	-----------------



CATEGORY	A	B	C	D
S-ILS 18R	CAT II	RA 106/12 100 DA 707		
S-ILS 18R		CAT IIIa RVR 07		
S-ILS 18R		CAT IIIb RVR 06		
S-ILS 18R		CAT IIIc NA		

CATEGORY II & III ILS - SPECIAL AIRCREW & AIRCRAFT CERTIFICATION REQUIRED

HIRL all Rwys

REIL Rwy 13L and 31L

TDZ/CL all Rwy except 13L and 31L