

LOC/DME I-LWN

**109.5**

Chan **32**

APP CRS

**135°**

Rwy Idg

**9300**

TDZE

**591**

Apt Elev

**607**

**ILS RWY 13R (SA CAT I & II)**

**DALLAS-FORT WORTH INTL (DFW)**

RADAR required for procedure entry.

SA Cat I: Requires specific OPSPEC, MSPEC, or LOA approval and use of HUD to DH. SA Cat II: Reduced lighting: Requires specific OPSPEC, MSPEC, or LOA approval and use of autoland or HUD to touchdown.

MALSR

MISSED APPROACH: Climb to 1560 then climbing right turn to 3000 on heading 230° and TTT VOR/DME R-275 to SLOTT INT/TTT 35.6 DME and hold.

D-ATIS

ARR **123.775**

DEP **135.925**

REGIONAL APP CON

**133.15 118.1**

DFW TOWER

**126.55 127.5 EAST**

**124.15 134.9 WEST**

GND CON

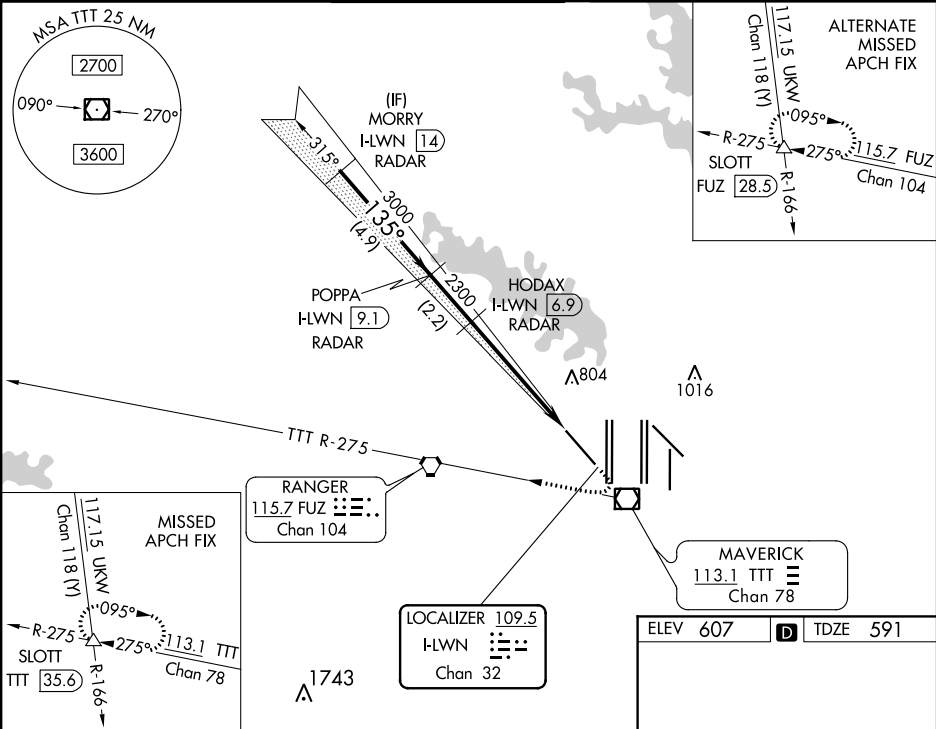
**121.65 121.8 EAST**

**121.85 WEST**

CLNC DEL

**128.25**

CPDLC



VGSI and ILS glidepath not coincident (VGSI Angle 3.00/TCH 71).

1560

3000

TTT R-275

SLOTT

MORRY I-LWN [14] RADAR

POPPA I-LWN [9.1] RADAR

HODAX I-LWN [6.9] RADAR

3000

135°

3000

2300

2300

2300

GS 3.00° TCH 55

4.9 NM

2.2 NM

5.2 NM

1080'

CATEGORY	A	B	C	D
S-ILS 13R	SA CAT I	RA 149/14	150 DA 741	
S-ILS 13R	SA CAT II	RA 99/12	100 DA 691	

**SA CATEGORY I & II ILS SPECIAL AIRCREW & AIRCRAFT CERTIFICATION REQUIRED**

HIRL all Rwy's

REIL Rwy's 13L and 31L

TDZ/CL all Rwy's except 13L, and 31L