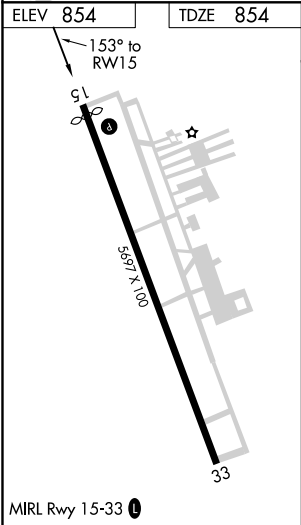
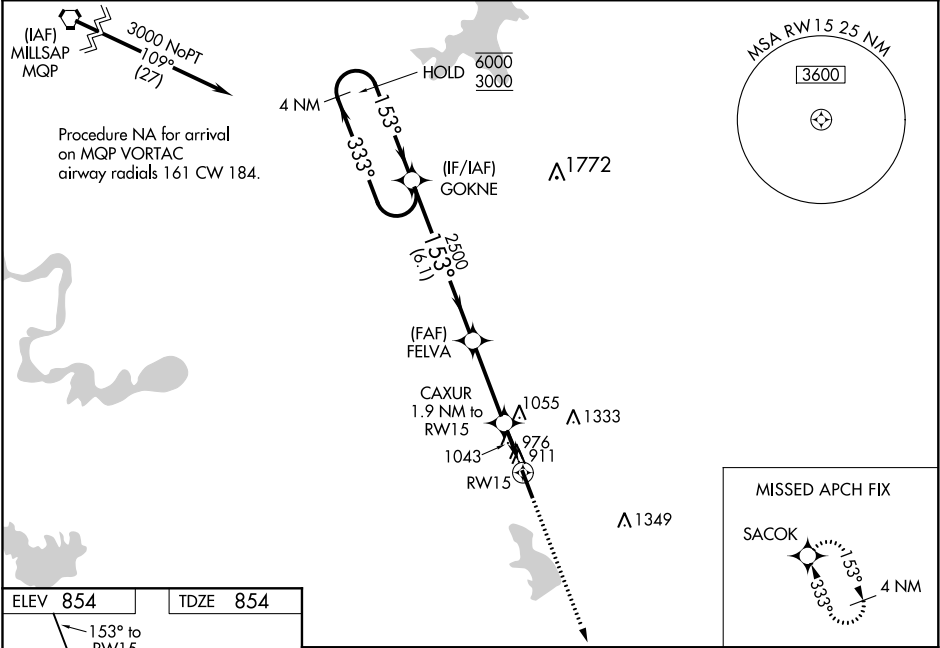


WAAS CH 61331 W15A	APP CRS 153°	Rwy Idg TDZE Apt Elev	5512 854 854
--	------------------------	-----------------------------	---

RNAV (GPS) RWY 15
CLEBURNE RGNL (CPT)

RNP APCH.	MISSED APPROACH: Climb to 3000 direct SACOK and hold.
▼ For uncompensated Baro-VNAV systems, LNAV/VNAV NA below -16°C or above 54°C. Rwy 15 helicopter visibility reduction below ¾ SM NA. ▲	

AWOS-3 119.525	REGIONAL APP CON 135.975 379.9	UNICOM 122.8 (CTAF) 0
--------------------------	--	---------------------------------



4 NM Holding Pattern		3000		SACOK	
6000 ← 333°		GOKNE		FELVA	
3000 → 153°		2500		CAXUR	
GP 3.00° TCH 39°		153°		1.9 NM to RWY15	
		2500		RWY15	
		6.1 NM		*1480	
		3.2 NM		1.9 NM	
CATEGORY		A		B	
LPV DA		1240-1⅓		386 (400-1⅓)	
LNAV/ VNAV		1397-1⅞		543 (600-1⅞)	
LNAV MDA		1360-1 506 (600-1)		1360-1⅓ 506 (600-1⅓)	
CIRCLING		1400-1 546 (600-1)		1680-2½ 826 (900-2½)	
				1700-2¾ 846 (900-2¾)	

SC-2, 31 DEC 2020 to 28 JAN 2021

SC-2, 31 DEC 2020 to 28 JAN 2021