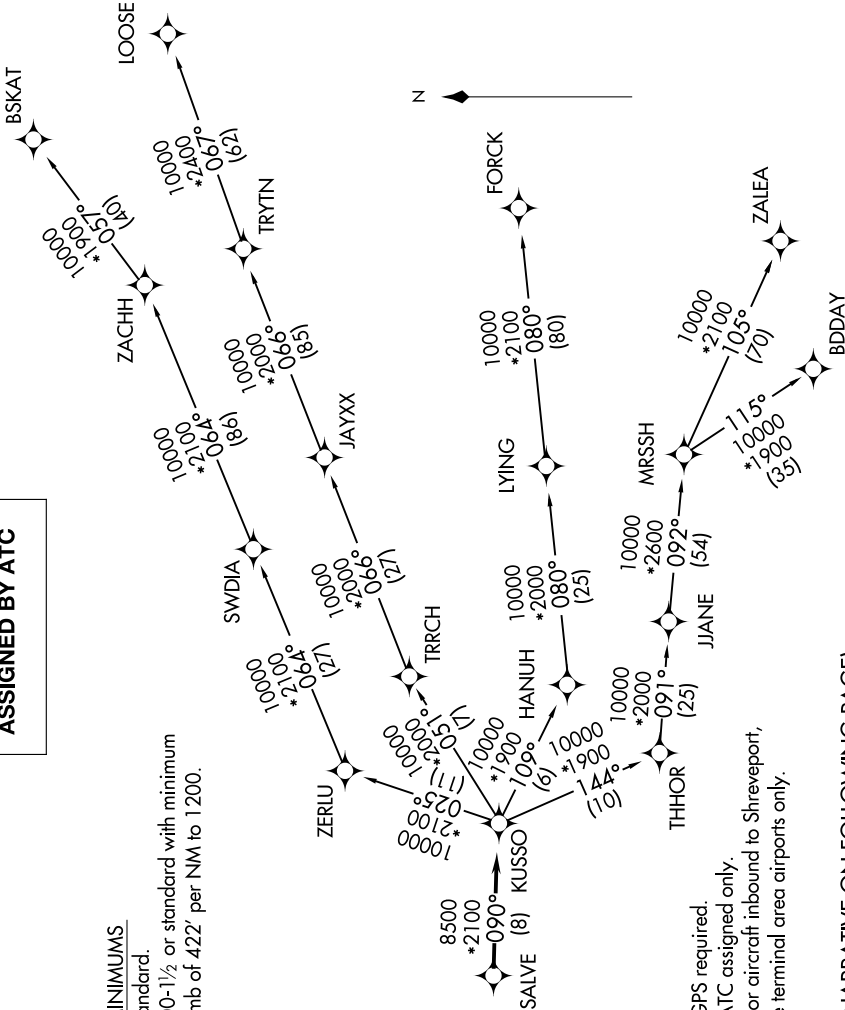


SC-2, 31 DEC 2020 to 28 JAN 2021

CTAF
122.8
REGIONAL DEP CON
135.975 379.9

TOP ALTITUDE:
ASSIGNED BY ATC

TAKEOFF MINIMUMS
Rwy 15: Standard.
Rwy 33: 300-1½ or standard with minimum
climb of 422' per NM to 1200.



NOTE: Chart not to scale.

(NARRATIVE ON FOLLOWING PAGE)

SC-2, 31 DEC 2020 to 28 JAN 2021