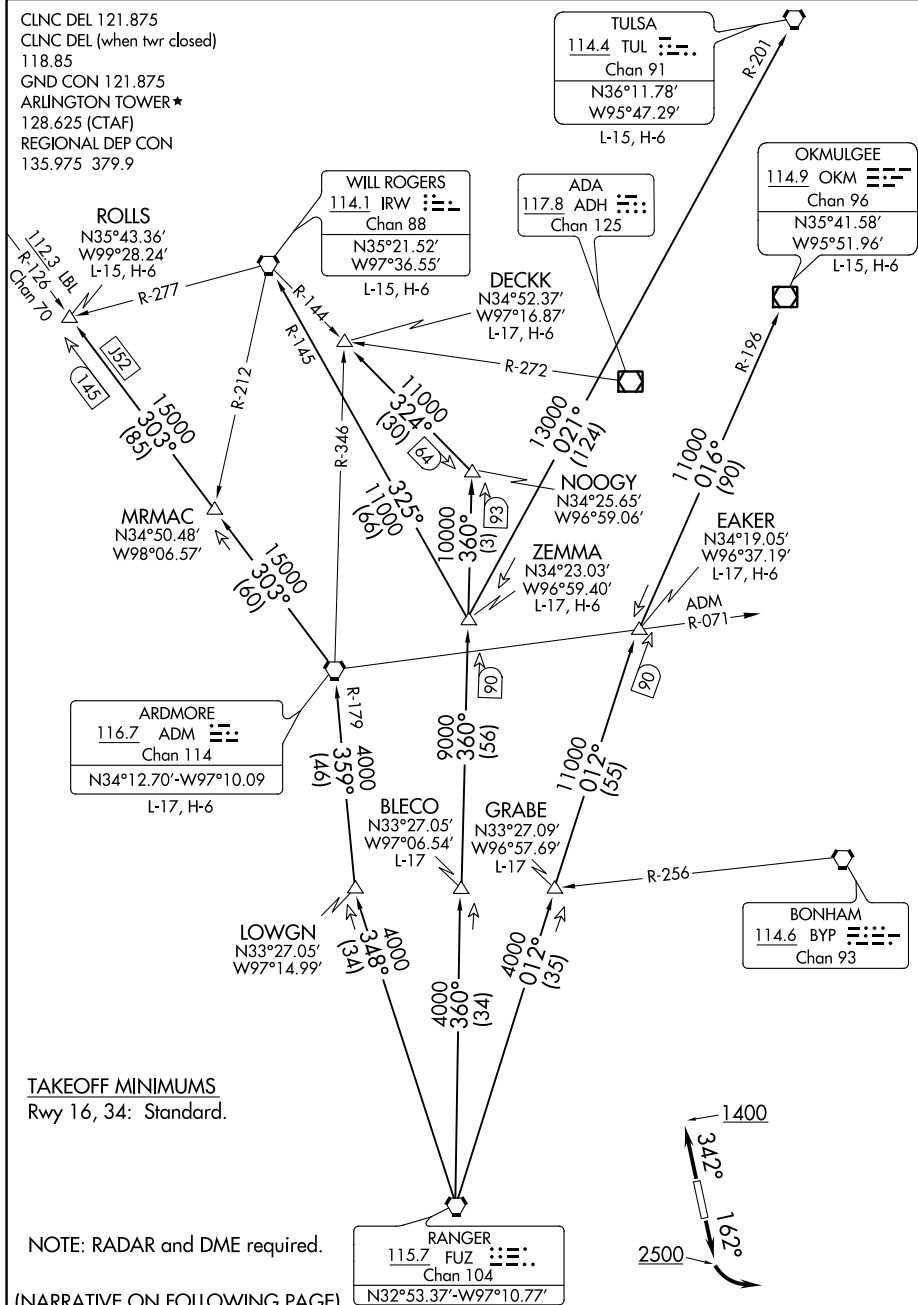


CLNC DEL 121.875  
CLNC DEL (when twr closed)  
118.85  
GND CON 121.875  
ARLINGTON TOWER★  
128.625 (CTAF)  
REGIONAL DEP CON  
135.975 379.9



TAKEOFF MINIMUMS  
Rwy 16, 34: Standard.

NOTE: RADAR and DME required.

(NARRATIVE ON FOLLOWING PAGE) (N32°55')  
(NOTES CONTINUED ON FOLLOWING PAGE)

NOTE: Chart not to scale

## TEXOMA NINE DEPARTURE

(TEX9.FUZ) 31DEC20

ARLINGTON, TEXAS  
ARLINGTON MUNI (GKY)

SC-2, 31 DEC 2020 to 28 JAN 2021