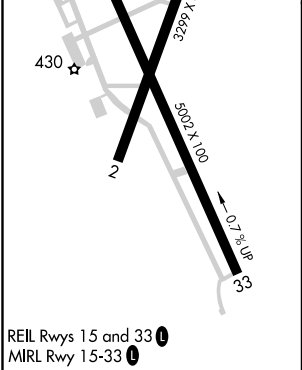
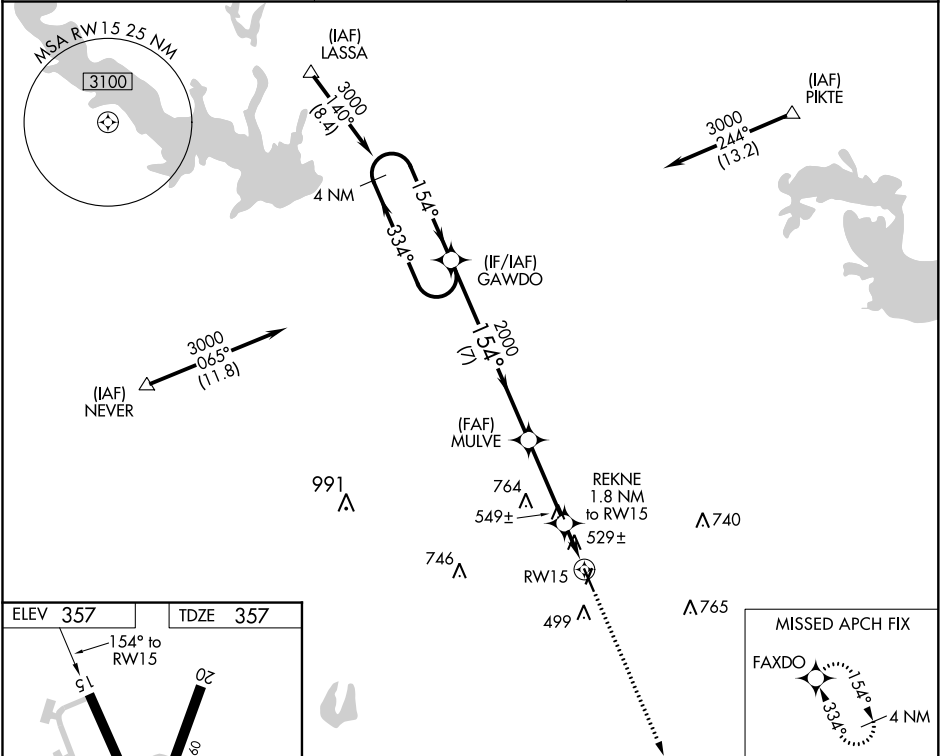


WAAS CH 90426 W15A	APP CRS 154°	Rwy Idg TDZE Apt Elev	5002 357 357
--	------------------------	-----------------------------	---

RNAV (GPS) RWY 15
HARRISON COUNTY (ASL)

RNP APCH.		MISSED APPROACH: Climb to 3000 direct FAXDO and hold.
<div><div><div>▼</div><div>▲ NA</div></div><div>Rwy 15 helicopter visibility reduction below 1 SM NA. When local altimeter setting not received, use Longview altimeter setting and increase all MDA 60 feet; increase LP Cat C visibility ½ mile. Procedure NA at night.</div></div>		
AWOS-3 118.675	SHREVEPORT APP CON 119.9 335.55	UNICOM 122.8 (CTAF) 0



VGSI and descent angles not coincident.				3000	FAXDO
GAWDO				↑	✧
MULVE				3000	
REKNE 1.8 NM to RW15				2000	
RW15				960	
7 NM				3.2 NM	1.8 NM
CATEGORY	A	B	C	D	
LP MDA	780-1	423 (500-1)	780-1¼ 423 (500-1¼)	NA	
LNAV MDA	800-1	443 (500-1)	800-1⅜ 443 (500-1⅜)	NA	