

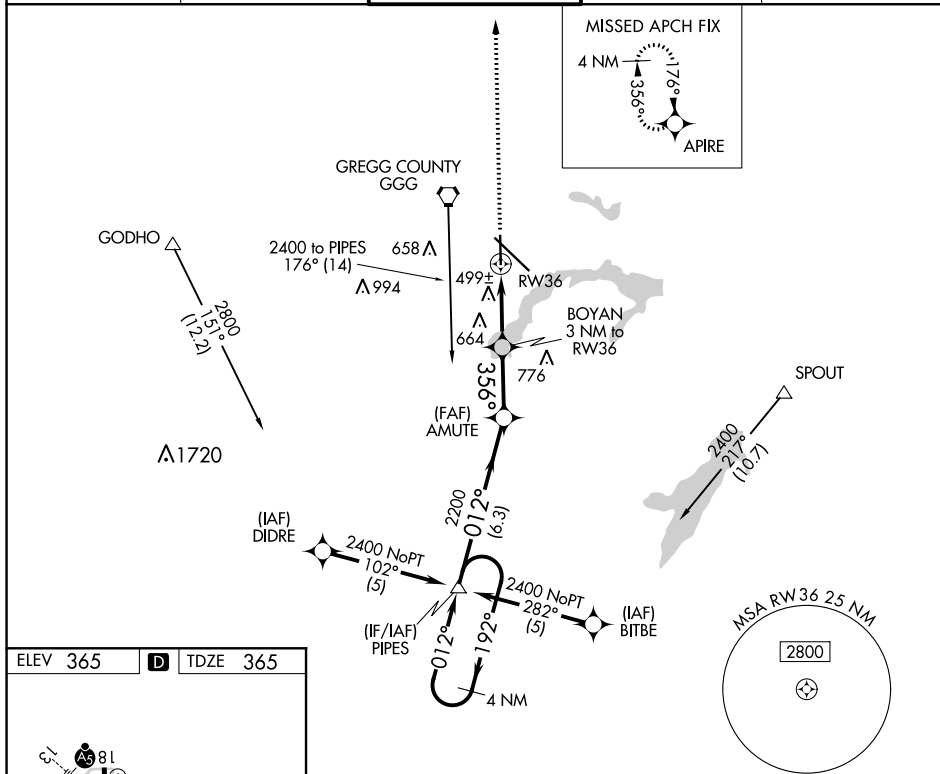
APP CRS 356°	Rwy Idg TDZE Apt Elev	6109 365 365
------------------------	-----------------------------	---

RNAV (GPS) RWY 36
EAST TEXAS RGNL (GGG)

T DME/DME RNP-0.3 NA. Visibility reduction by helicopters NA.
A When local altimeter setting not received, use Gilmer altimeter setting and increase all MDA 60 feet and LNAV Cat C and D visibility ¼ mile.

MISSED APPROACH: Climb to 2600
direct APIRE and hold.

ATIS 119.65	LONGVIEW APP CON* 128.75 379.15	EASTEX TOWER* 119.2 (CTAF) 0377.05	GND CON 121.6	UNICOM 122.95
-----------------------	---	--	-------------------------	-------------------------



<div>2600 ↑</div> <div>APIRE ✦</div>		<p>Diagram description: The diagram shows a flight path starting from RW36. It includes a 3.05° climb, a 356° turn, and a 192° turn. Altitudes are marked at 1380, 2200, and 2400. Distances between waypoints are 3 NM, 2.5 NM, and 6.3 NM. The path ends at a 4 NM Holding Pattern.</p>			
CATEGORY	A	B	C	D	
RNAV MDA	760-1 395 (400-1)			760-1¼ 395 (400-1¼)	
CIRCLING	860-1 495 (500-1)		860-1½ 495 (500-1½)	920-2 555 (600-2)	

SC-2, 31 DEC 2020 to 28 JAN 2021