

WAAS CH 53504 W31A	APP CRS 311°	Rwy Idg 9200 TDZE 354 Apt Elev 365
--	------------------------	---

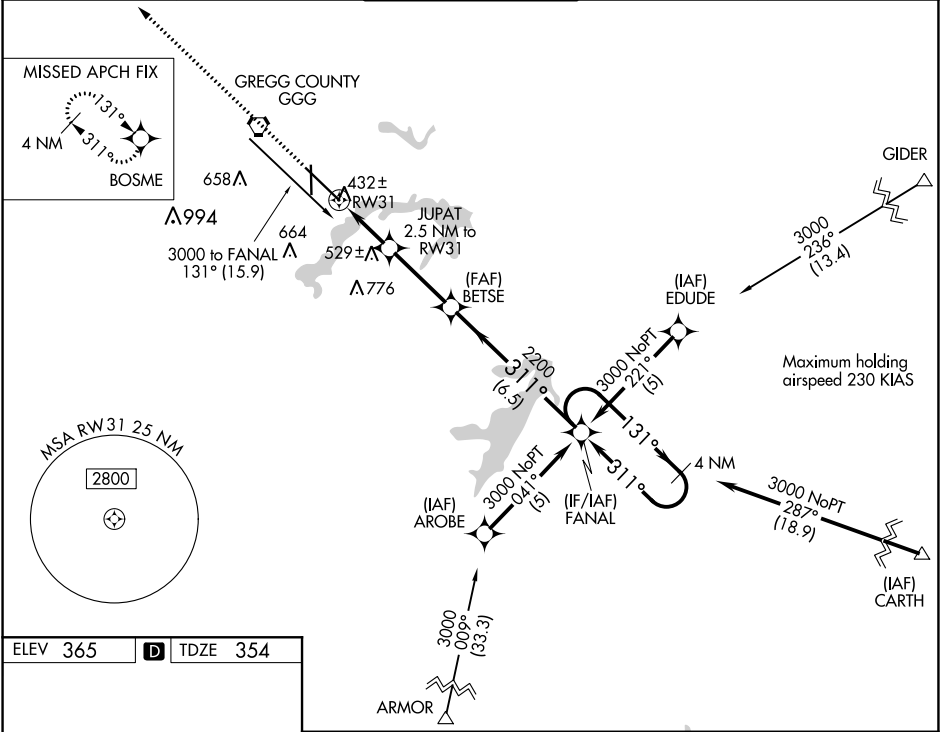
RNAV (GPS) RWY 31

EAST TEXAS RGNL (GGG)

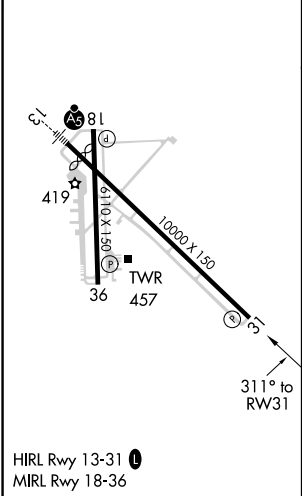
⚠ Baro-VNAV NA when using Gilmer altimeter setting. For uncompensated Baro-VNAV systems, LNAV/VNAV NA below -15°C (5°F) or above 48°C (118°F). DME/DME RNP-0.3 NA. VDP NA when using Gilmer altimeter setting. When local altimeter setting not received, use Gilmer altimeter setting and increase all DA 59 feet, all MDA 60 feet and all visibilities ¼ mile.



⚠ MISSED APPROACH: Climb to 2600 direct BOSME and hold.

ATIS 119.65	LONGVIEW APP CON★ 128.75 379.15	EASTEX TOWER★ 119.2(CTAF) 0377.05	GND CON 121.6	UNICOM 122.95
-----------------------	---	---	-------------------------	-------------------------



ELEV 365	D	TDZE 354
-----------------	----------	-----------------



2600 ↑		BOSME 		* LNAV only		FANAL		4 NM Holding Pattern	
		JUPAT 2.5 NM to RW31		BETSE 2200					
		* 1.2 NM to RW31		* 1200		311°		131° → 3000	
		1.2		1.3		3.1 NM		6.5 NM	
						2200		GP 3.00° TCH 50	
CATEGORY	1.2	1.3	3.1 NM		6.5 NM				
CATEGORY	A		B		C		D		E
LPV DA			604-3/4		250 (300-3/4)				
LNAV/ VNAV DA			682-1 1/4		328 (400-1 1/4)				
LNAV MDA	800-1 446 (500-1)		800-1 1/4 446 (500-1 1/4)		800-1 1/2 446 (500-1 1/2)				
CIRCLING	860-1 495 (500-1)		860-1 1/2 495 (500-1 1/2)		920-2 555 (600-2)		1080-2 1/2 715 (800-2 1/2)		