


WAAS CH <b>82202</b> <b>W15A</b>	APP CRS <b>155°</b>	Rwy ldg <b>6224</b> TDZE <b>643</b> Apt Elev <b>645</b>
--	------------------------	---

RNAV (GPS) RWY 15

ADDISON (ADS)

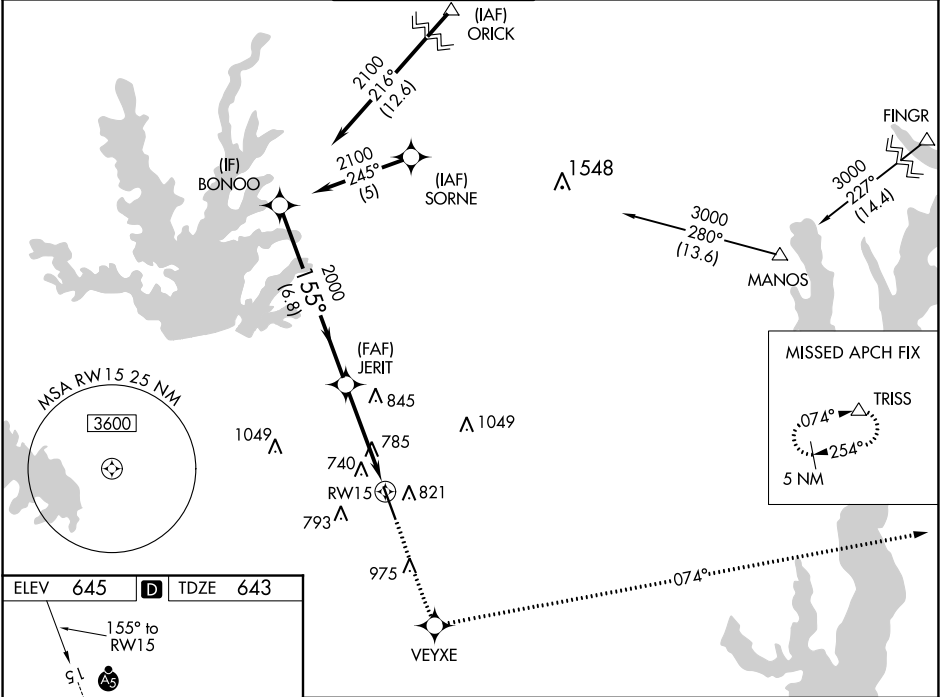
▼ When local altimeter setting not received, use Dallas-Love Field altimeter setting and increase all DA 39 feet and MDA 40 feet, increase LNAV/VNAV all Cats visibility and Circling Cat C visibility ¼ SM. Inoperative table does not apply to LPV all Cats and LNAV Cats A/B. Baro-VNAV NA when using Dallas Love Field altimeter setting. For uncompensated Baro-VNAV systems, LNAV/VNAV NA below -16°C (4°F) or above 47°C (117°F). DME/DME RNP-0.3 NA. Helicopter visibility reduction below 1 SM NA. For inoperative MALSR increase LNAV Cat C visibility to 1¼.

MALSR

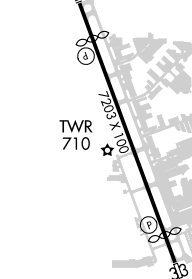



MISSED APPROACH:  
Climb to 3000 direct  
VEYXE and via 074°  
track to TRISS and  
hold.




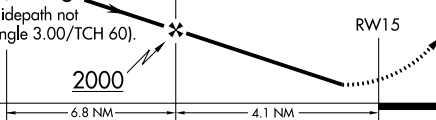
ATIS <b>133.4</b>	REGIONAL APP CON <b>124.3 282.275</b>	ADDISON TOWER ★ <b>126.0 (CTAF) 239.0</b>	GND CON <b>121.6</b>	CLNC DEL <b>119.55</b>	UNICOM <b>122.95</b>
----------------------	--	--	-------------------------	---------------------------	-------------------------



ELEV **645** **D** TDZE **643**



REIL Rwy 33  
HIRL Rwy 15-33 

Procedure	BONOO	3000	VEYXE	TRISS
Turn	NA			
	2100	155°		tr 074°
VGSI and RNAV glidepath not coincident (VGSI Angle 3.00/TCH 60).				
GP 3.00° TCH 52				
				
CATEGORY	A	B	C	D
LPV DA	943-1 300 (300-1)			
LNAV/VNAV DA	1076-1 433 (500-1)			
LNAV MDA	1100-1 457 (500-1)			
<b>C</b> CIRCLING	1200-1 555 (600-1)	1280-1¾ 635 (700-1¾)	1400-2½ 755 (800-2½)	

SC-2, 31 DEC 2020 to 28 JAN 2021

SC-2, 31 DEC 2020 to 28 JAN 2021