

LOC/DME I-TBQ <b><u>110.1</u></b> Chan <b>38</b>	APP CRS <b>335°</b>	Rwy Idg <b>6431</b> TDZE <b>644</b> Apt Elev <b>644</b>
--	------------------------	---

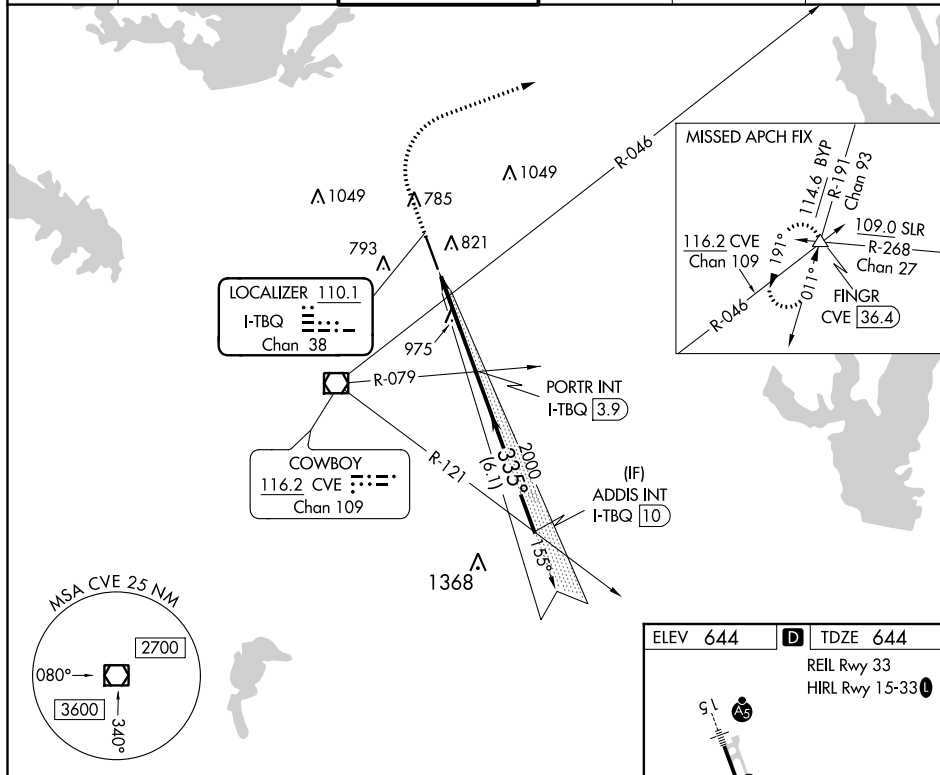
ILS or LOC RWY 33  
ADDISON (ADS)

RADAR required for procedure entry.

- T** Rwy 33 helicopter visibility reduction below  $\frac{3}{4}$  SM NA. When local altimeter setting not received, use Dallas-Love Field altimeter setting and increase all DA 39 feet and MDA 40 feet, increase S-LOC 33 Cat C/D visibility  $\frac{1}{4}$  SM.

**MISSED APPROACH:** Climb to 1 500 then climbing right turn to 5000 via heading 065° and CVE VOR/DME R-046 to FINGR INT/CVE 36.4 DME and hold.

ATIS 133.4	REGIONAL APP CON 124.3 282.275	ADDISON TOWER ★ 126.0 (CTAF) 0 239.0	GND CON 121.6	CLNC DEL 119.55	UNICOM 122.95
---------------	-----------------------------------	---	------------------	--------------------	------------------



1500 ↑	5000 hdg 065°	CVE R-046	FINGR △				
CATEGORY	A	B	C	D			
S-ILS 33	894-1 250 (300-1)						
S-LOC 33	1240-1 596 (600-1)		1240-1½ 596 (600-1½)		1240-1¾ 596 (600-1¾)		

