

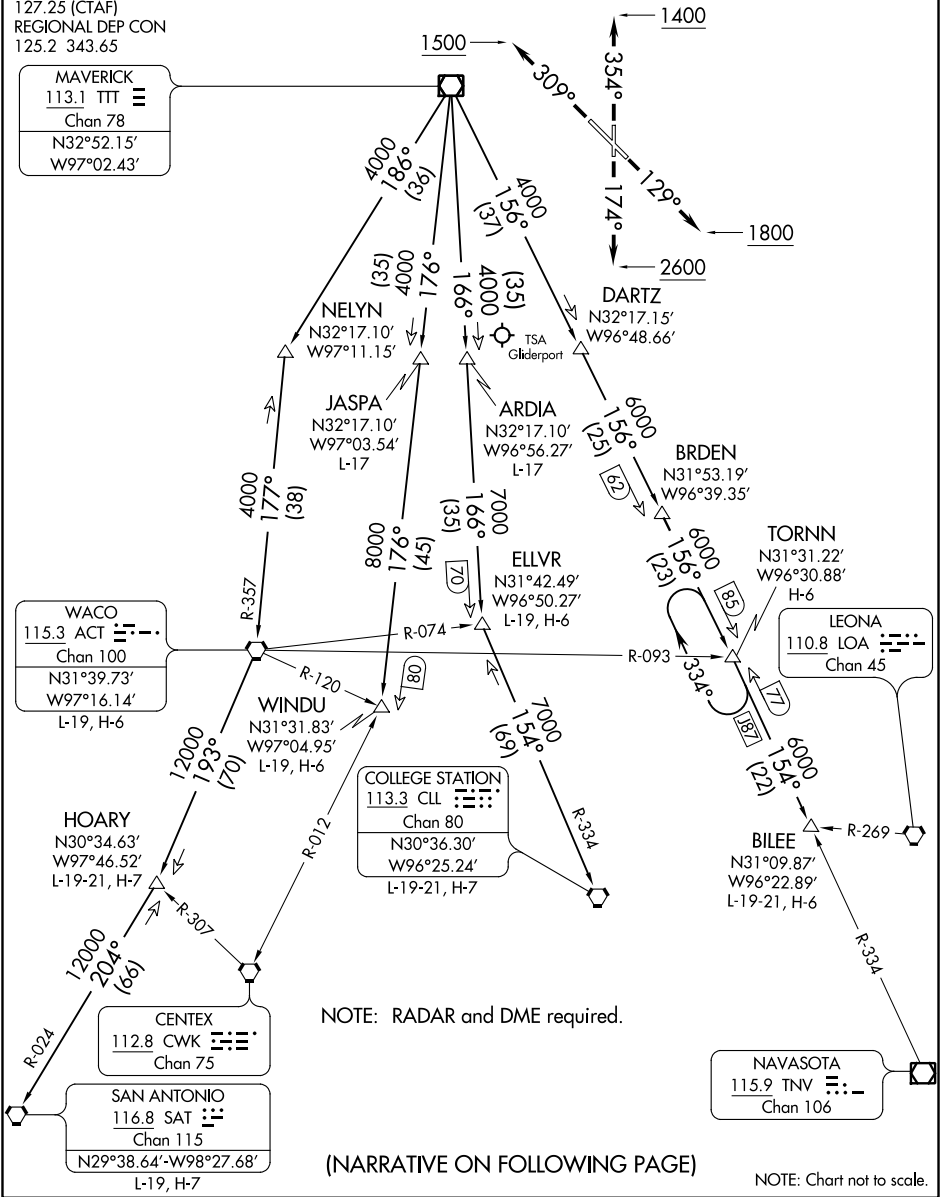
JOE POOL TWO DEPARTURE

ATIS  
126.35  
CLNC DEL  
118.625  
GND CON  
119.475  
EXECUTIVE TOWER ★  
127.25 (CTAF)  
REGIONAL DEP CON  
125.2 343.65

MAVERICK  
113.1 TTT  
Chan 78  
N32°52.15'  
W97°02.43'

TAKEOFF MINIMUMS

Rwys 13, 31, 35: Standard.  
Rwys 17: 400-2¾ or standard with a minimum climb of 220' per NM to 1200.



SC-2, 31 DEC 2020 to 28 JAN 2021

SC-2, 31 DEC 2020 to 28 JAN 2021

JOE POOL TWO DEPARTURE