

WAAS CH <b>42632</b> <b>W35A</b>	APP CRS <b>352°</b>	Rwy Idg TDZE Apt Elev	<b>4809</b> <b>3641</b> <b>3649</b>
--	------------------------	-----------------------------	---

RNAV (GPS) RWY 35

TRADEWIND (TDW)

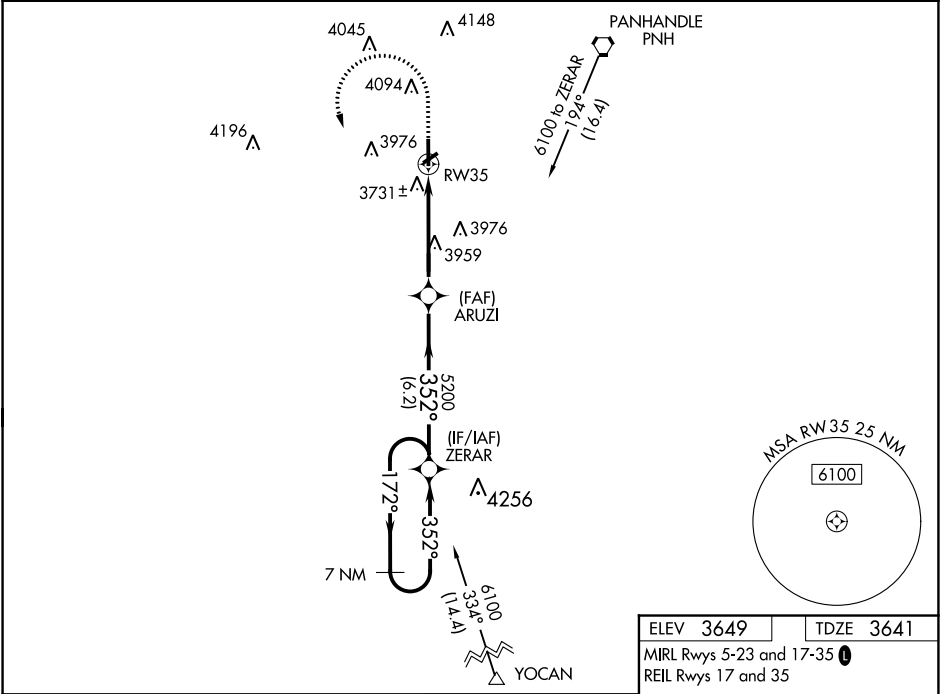
▼

⚠ NA

Baro-VNAV NA. Use Rick Husband Amarillo Intl altimeter setting; when not received, use Hereford altimeter setting and increase all DA 69 feet and all MDA 80 feet, increase LPV all Cats visibility ½ mile and LNAV/VNAV all Cats visibility ¼ mile. Procedure NA at night. DME/DME RNP-0.3 NA. Helicopter visibility reduction below 1SM NA.

MISSED APPROACH: Climb to 4100 then climbing left turn to 6100 direct ZERAR and hold.

AWOS-AV <b>118.475</b>	AMARILLO APP CON ★ <b>119.5 307.0</b>	CLNC DEL <b>125.4</b>	UNICOM <b>122.8 (CTAF) 0</b>
---------------------------	--	--------------------------	---------------------------------



7 NM

Holding Pattern

4100

6100

ZERAR

6100

←172°

352°→

ZERAR

ARUZI

5200

352°

5200

RW35

GP 3.00°

TCH 40°

6.2 NM

4.8 NM

CATEGORY

A

B

C

D

LPV DA

3913-1 272 (300-1)

NA

LNAV/VNAV DA

3947-1 306 (300-1)

NA

LNAV MDA

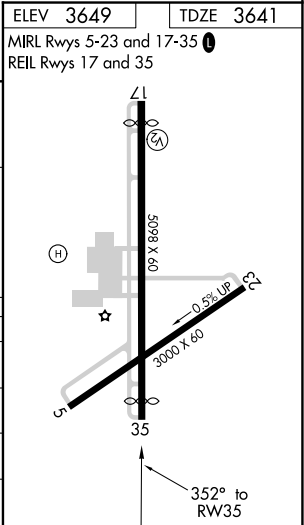
4300-1 659 (700-1)

NA

CIRCLING

4300-1 651 (700-1)

NA



SC-2, 31 DEC 2020 to 28 JAN 2021

SC-2, 31 DEC 2020 to 28 JAN 2021