

TYLER, TEXAS


AL-622 (FAA)

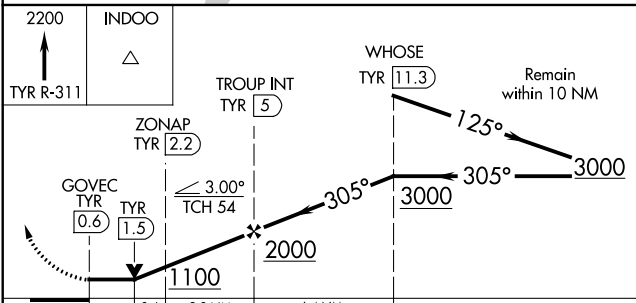
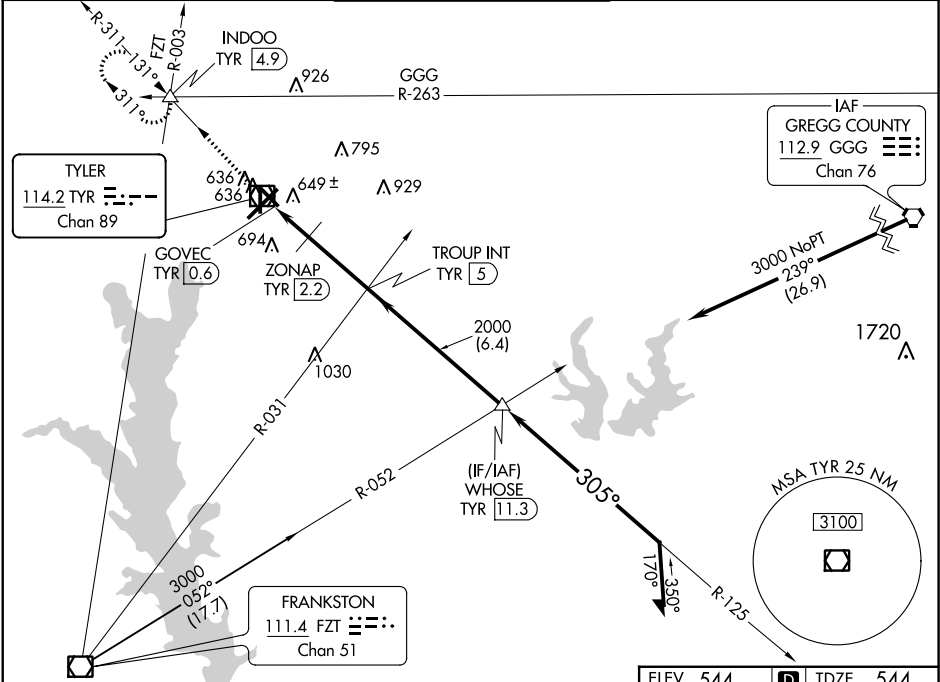
20310



VOR/DME TYR	APP CRS	Rwy Idg	5200
114.2	305°	TDZE	544
Chan 89		Apt Elev	544

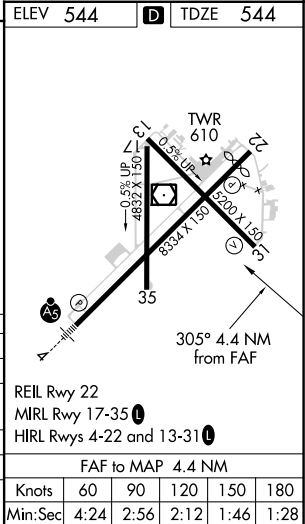
# VOR RWY 31

TYLER POUNDS RGNL (TYR)

 Rwy 31 helicopter visibility reduction below 3/4 SM NA.	MISSED APPROACH: Climb to 2200 on TYR VOR/DME R-311 to INDOO INT/4.9 DME and hold.			
ATIS 126.25	LONGVIEW APP CON ★ 128.75 379.15	POUNDS TOWER ★ 120.1 (CTAF) 0 257.8	GND CON 121.9	UNICOM 122.95



CATEGORY	A	B	C	D
S-31	1100-1	556 (600-1)	1100-1 5/8	556 (600-1 5/8)
 CIRCLING	1100-1	556 (600-1)	1160-1 3/4 616 (700-1 3/4)	1280-2 1/4 736 (800-2 1/4)
ZONAP FIX MINIMUMS (DME REQUIRED)				
S-31	900-1	356 (400-1)		
 CIRCLING	980-1 436 (500-1)	1020-1 476 (500-1)	1160-1 3/4 616 (700-1 3/4)	1280-2 1/4 736 (800-2 1/4)



TYLER, TEXAS  
Amdt 3A 15AUG19

32°21'N-95°24'W

TYLER POUNDS RGNL (TYR)  
VOR RWY 31

SC-2, 31 DEC 2020 to 28 JAN 2021

SC-2, 31 DEC 2020 to 28 JAN 2021