

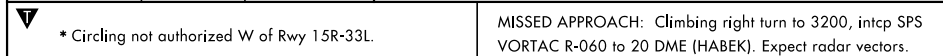
WICHITA FALLS, TEXAS

VOR/DME-E

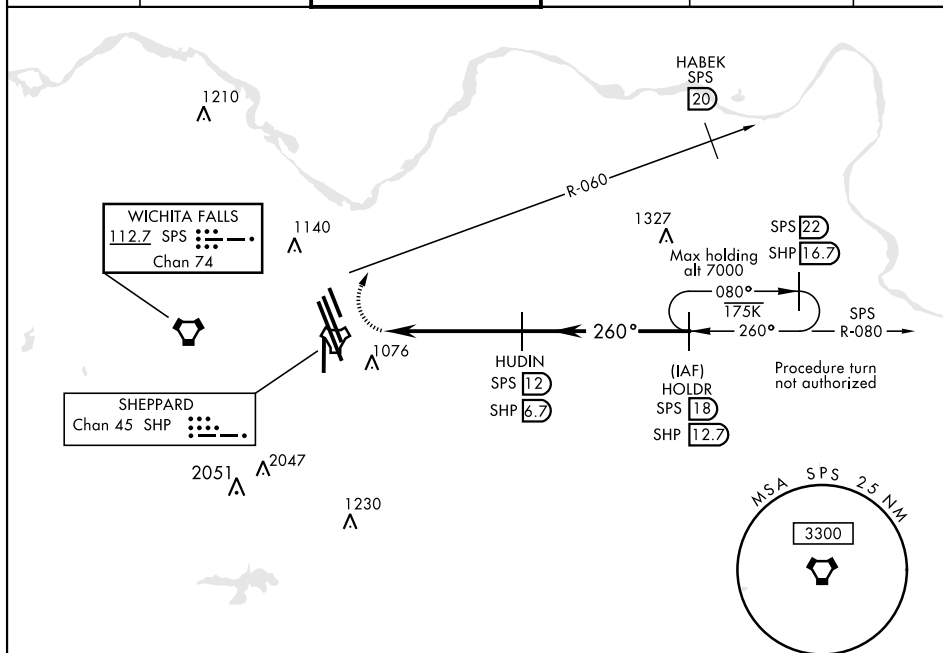
VORTAC SPS <u>112.7</u> Chan 74	APCH CRS 260°	Rwy Idg N/A TDZE N/A Arpt Elev 1019
---	-------------------------	--

AL-454 (USAF)

SHEPPARD AFB/WICHITA FALLS MUNI (KSPS)



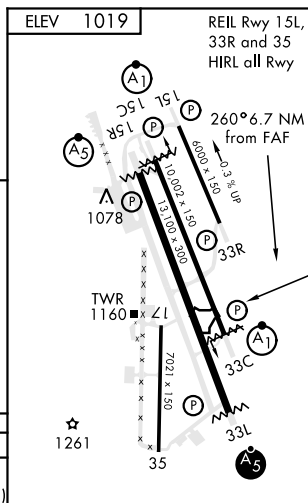
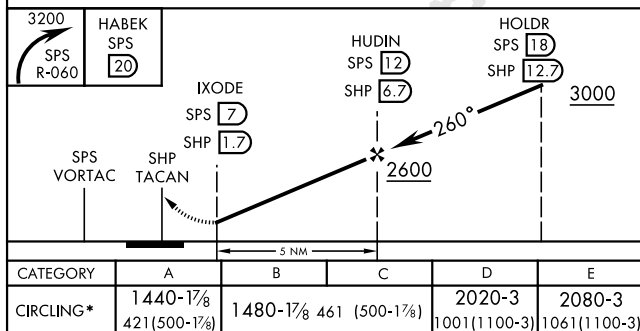
ATIS ★ 132.05 269.9	SHEPPARD APP CON 118.2 269.025	SHEPPARD TOWER ★ 119.75 0 279.525 (CTAF)	GND CON 125.5 289.4	CLNC DEL 121.2 282.225	ASR
------------------------	-----------------------------------	---	------------------------	---------------------------	-----



SC-2, 31 DEC 2020 to 28 JAN 2021

RADAR REQUIRED

EMERG SAFE ALT 100 NM 4600



WICHITA FALLS, TEXAS

33°59'N-98°30'W

SHEPPARD AFB/WICHITA FALLS MUNI (KSPS)

Amdt 8 16JUL20

VOR/DME-E