

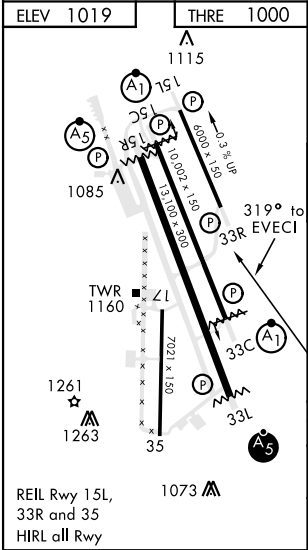
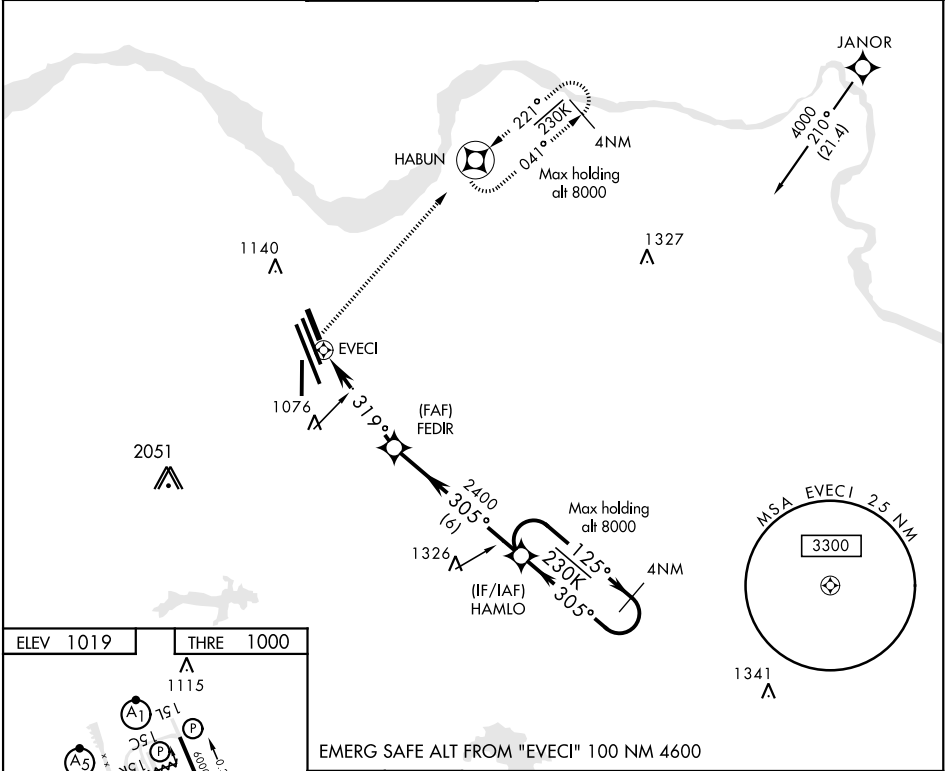
APCH CRS	Rwy Idg	6000
319°	THRE	1000
	Arpt Elev	1019



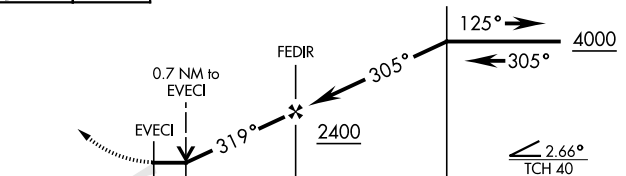

AL-454 [USAF]

RNAV (GPS) RWY 33R

SHEPPARD AFB/WICHITA FALLS MUNI (KSPS)

* Circling NA West of RWY 15R/33L. DME/DME RNP-0.3 NA.			MISSED APPROACH: Climbing right turn to 3000 direct HABUN and hold.		
ATIS ★	SHEPPARD APP CON	SHEPPARD TOWER ★	GND CON	CLNC DEL	ASR
132.05 269.9	118.2 269.025	119.75 279.525 (CTAF)	125.5 289.4	121.2 282.225	



EMERG SAFE ALT FROM "EVEC1" 100 NM 4600						
<div>3000</div> <div></div>		<div>HABUN</div> <div></div> <div>VGSI and descent angle not coincident</div>				
<div><p>Diagram details: HABUN (3000) to EVECI (2400) is 0.7 NM. EVECI to FEDIR is 4.3 NM at 319°. FEDIR to HAMLO is 2400 at 305°. HAMLO to 4000 is 125° and 305°. TCH 40 is 2.66°.</p></div>						
CATEGORY	A		B	C	D	E
LNAV MDA	1420-1 420 (500-1)		1420-1½ 420 (500-1½)		NA	
 CIRCLING*	1440-1 421 (500-1)	1480-1 461 (500-1)	1480-1½ 461 (500-1½)	2020-3 1001(1100-3)	NA	

RNAV (GPS) RWY 33R

SC-2, 31 DEC 2020 to 28 JAN 2021

SC-2, 31 DEC 2020 to 28 JAN 2021