

## RNAV (GPS) RWY 15R

APCH CRS <b>153°</b>	Rwy Idg <b>13,100</b> TDZE <b>998</b> Arpt Elev <b>1019</b>
-------------------------	---

AL-454 [USAF]

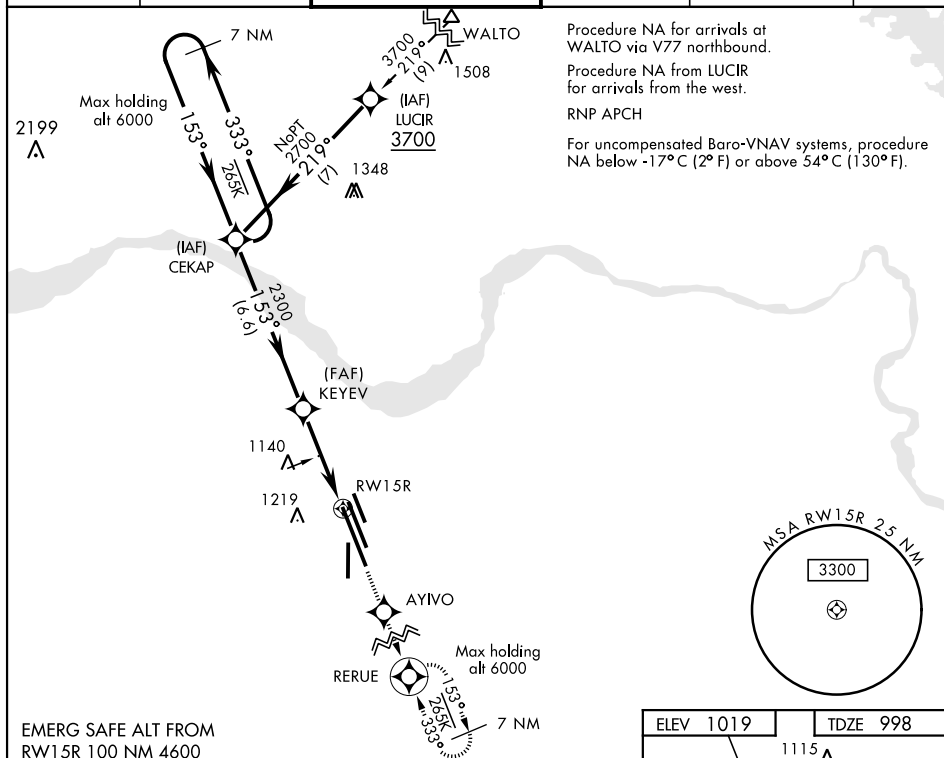
SHEPPARD AFB/WICHITA FALLS MUNI (KSPS)

**T** \* When ALS inop, increase CAT A vis to  $\frac{3}{4}$  mile; CAT BCDE vis to  $\frac{7}{8}$  mile.  
 \*\* When ALS inop, increase CAT AB vis to 1 mile; CAT CDE vis to  $1\frac{1}{4}$  miles.  
 \*\*\* Circling NA West of Rwy 15R-33L.

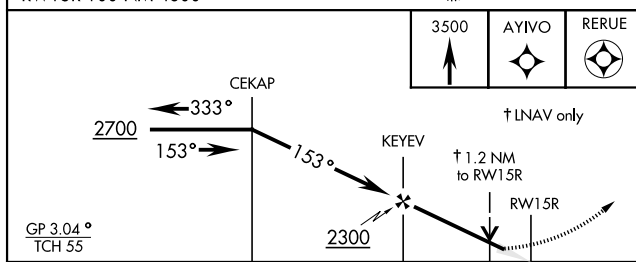


**MISSED APPROACH:** Climb to 3500 direct AYIVO and via 153° track to RERUE and hold.

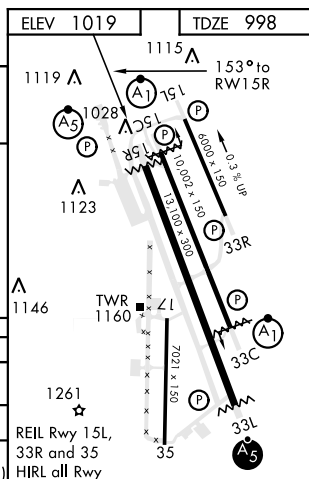
ATIS ★	SHEPPARD APP CON	SHEPPARD TOWER ★	GND CON	CLNC DEL	ASR
132.05 269.9	118.2 269.025	119.75 0 279.525 (CTAF)	125.5 289.4	121.2 282.225	



EMERG SAFE ALT FROM  
RW15R 100 NM 4600



		← 3.9 NM →			
CATEGORY	A	B	C	D	E
LNAY/VNAV DA*	1255-½ 257 (300-½)	1266-½ 268 (300-½)	1274-½ 276 (300-½)	1285-½ 287 (300-½)	
LNAY MDA**	1420-½	422 (500-½)	1420-¾		422 (500-¾)
CIRCLING***	1440-1 421 (500-1)	1480-1 461 (500-1)	1480-1½ 461 (500-1½)	2020-3 1001 (1100-3)	2080-3 1061 (1100-3)



WICHITA FALLS, TEXAS

33°59'N-98°30'W

SHEPPARD AFB/WICHITA FALLS MUNI (KSPS)

## RNAV (GPS) RWY 15R

Amdt 4 21MAY20

SC-2, 31 DEC 2020 to 28 JAN 2021