

## RNAV (GPS) RWY 15C

APCH CRS <b>153°</b>	Rwy Idg <b>10,002</b> TDZE <b>1003</b> Arpt Elev <b>1019</b>
-------------------------	--------------------------------------------------------------------

AL-454 [USAF]

SHEPPARD AFB/WICHITA FALLS MUNI

(KSPS)

**T** \* When ALS inop, increase vis to 1/8 miles.  
 \*\* When ALS inop, increase CAT AB vis to 1 mile; CAT CDE vis to 1/8 miles.  
 \*\*\* Circling NA southwest of Rwy 15R-33L.

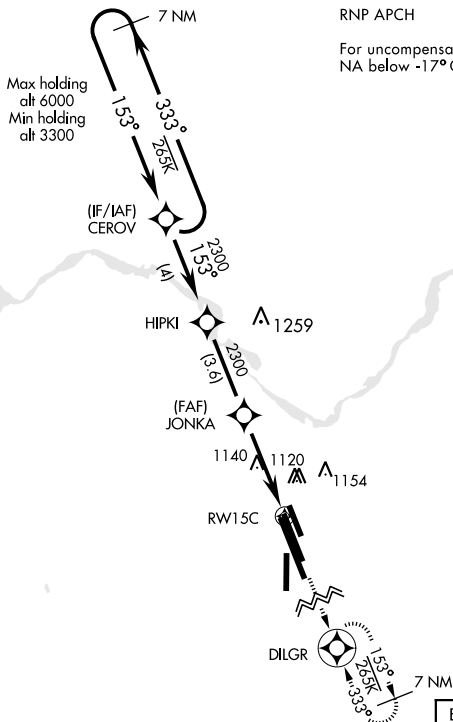


MISSED APPROACH: Climb to 3100 direct DILGR and hold.

ATIS ★ 132.05 269.9	SHEPPARD APP CON 118.2 269.025	SHEPPARD TOWER ★ 119.75 0 279.525 (CTAF)	GND CON 125.5 289.4	CLNC DEL 121.2 282.225	ASR
------------------------	-----------------------------------	---------------------------------------------	------------------------	---------------------------	-----

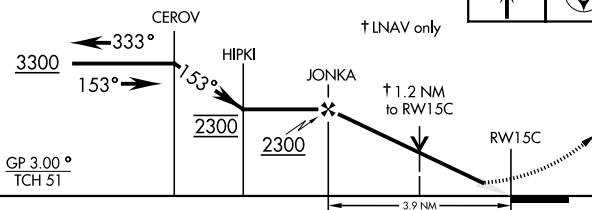
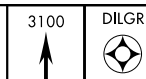
RNP APCH

For uncompensated Baro-VNAV systems, LNAV/VNAV NA below -17°C (2°F) or above 54°C (130°F).

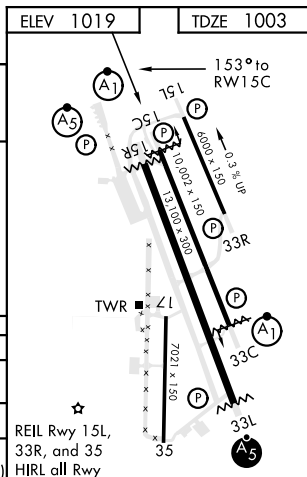


EMERG SAFE ALT 100 NM 4600

VGSI and RNAV glidepath not coincident (VGSI Angle 3.00/TCH 46).



CATEGORY	A	B	C	D	E
LNAV/VNAV DA *	1397- $\frac{5}{8}$		394	(400- $\frac{5}{8}$ )	
LNAV MDA **	1420- $\frac{1}{2}$	417 (500- $\frac{1}{2}$ )	1420- $\frac{3}{4}$	417 (500- $\frac{3}{4}$ )	
*** CIRCLING	1440-1 421 (500-1)	1480-1 461 (500-1)	1480-1 $\frac{1}{2}$ 461 (500- $\frac{1}{2}$ )	2020-3 1001(1100-3)	2080-3 1061(1100-3)



WICHITA FALLS, TEXAS

33°59'N-98°30'W

SHEPPARD AFB/WICHITA FALLS MUNI

(KSPS)

Orig 21MAY20

## RNAV (GPS) RWY 15C

SC-2, 31 DEC 2020 to 28 JAN 2021

SC-2, 31 DEC 2020 to 28 JAN 2021