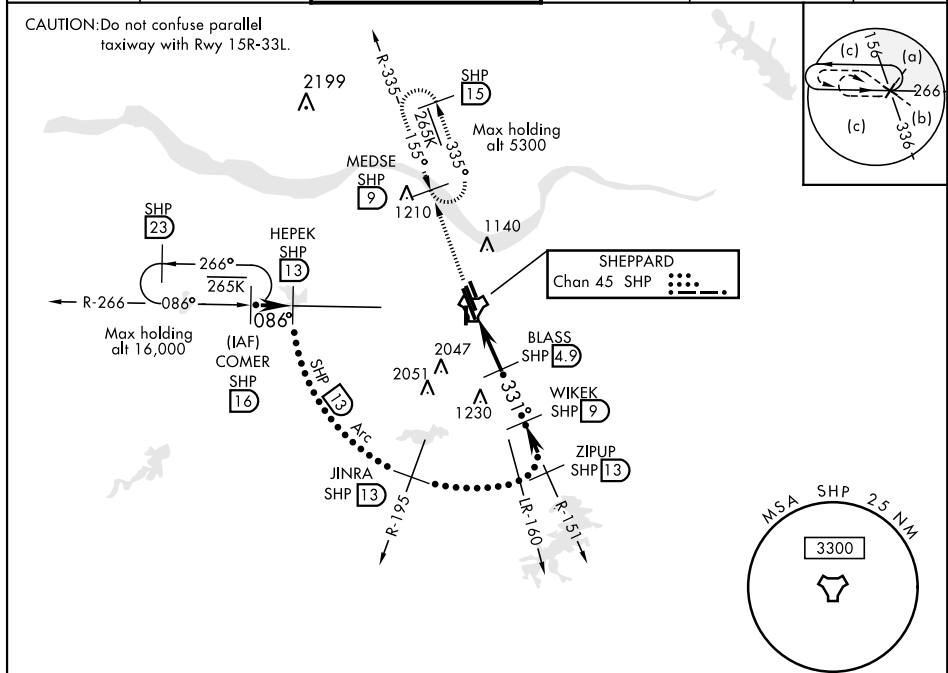


# HI-TACAN RWY 33C

TACAN SHP Chan 45	APCH CRS 331°	Rwy Idg THRE 989 Arpt Elev 1019	JAL-454 [USAF]	SHEPPARD AFB/WICHITA FALLS MUNI (KSPS)
<p>▼ * When ALS inop, increase CAT CDE vis to 1 mile.  ** Circling not authorized W of Rwy 15R-33L.</p>				
ATIS *	SHEPPARD APP CON	SHEPPARD TOWER *	GND CON	CLNC DEL
132.05 269.9	118.2 269.025	119.75 0 279.525 (CTAF)	125.5 289.4	121.2 282.225
				ASR



EMERG SAFE ALT 100 NM 4600

<p>VGSI and descent angles not coincident.</p>			3300 SHP R-335	MEDSE SHP 9	ELEV 1019	THRE 989
<p>COMER R-266 16, HEPEK 13, JINRA R-195 13, ZIPUP R-151 13, BLASS 4.9, WIKEK 9, TACAN, KUPRE 0.7, 1.2, 2.51° TCH 48</p>						
CATEGORY	C	D	E			
S-33C *	1360-5%	371 (400-%)				
CIRCLING **	1480-1½ 461 (500-1½)	2020-3 1001 (1100-3)	2080-3 1061 (1100-3)			

# HI-TACAN RWY 33C