
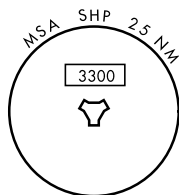
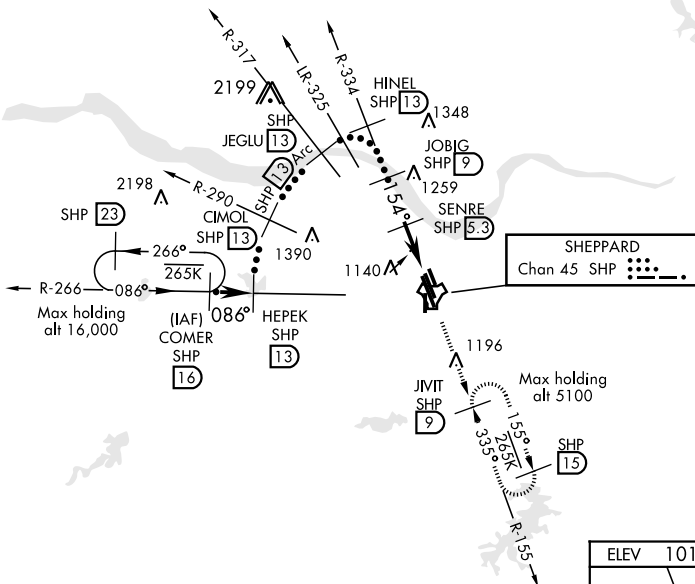
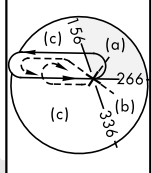


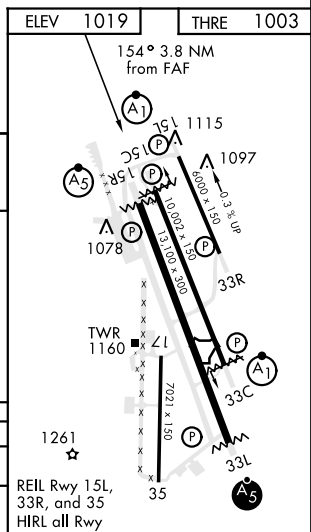
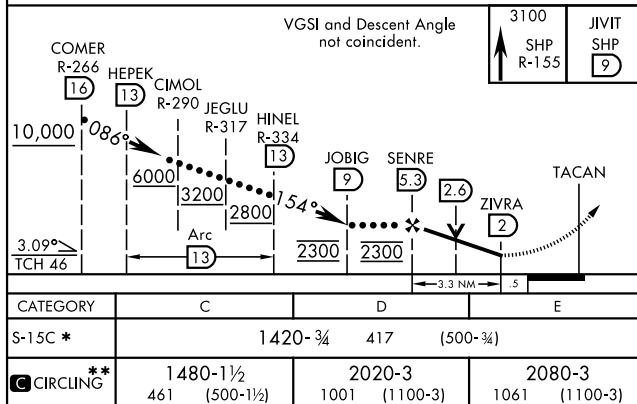
## HI-TACAN RWY 15C

TACAN SHP Chan 45	APCH CRS 154°	Rwy Idg 10,002 THRE 1003 Arpt Elev 1019	JAL-454 [USAF]	SHEPPARD AFB/WICHITA FALLS MUNI (KSPS)	
▼ * When ALS inop, increase CAT CDE vis to 1½ miles. ** Circling not authorized W of Rwy 15R-33L.			ALSIF-1 	MISSED APPROACH: Climb and maintain 3100, intercept SHP TACAN R-155 to SHP R-155/9 DME (JIVIT) and hold.	
ATIS ★ 132.05 269.9	SHEPPARD APP CON 118.2 269.025	SHEPPARD TOWER ★ 119.75 0 279.525 (CTAF)	GND CON 125.5 289.4	CLNC DEL 121.2 282.225	ASR

CAUTION: Do not confuse parallel taxiway with Rwy 15R-33L.



EMERG SAFE ALT 100 NM 4600



## HI-TACAN RWY 15C