

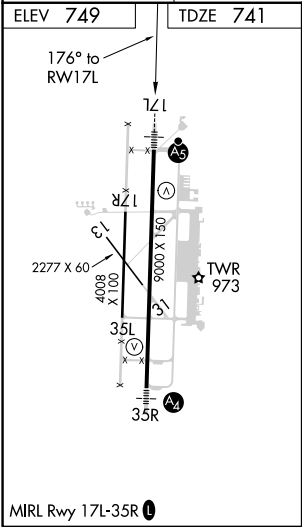
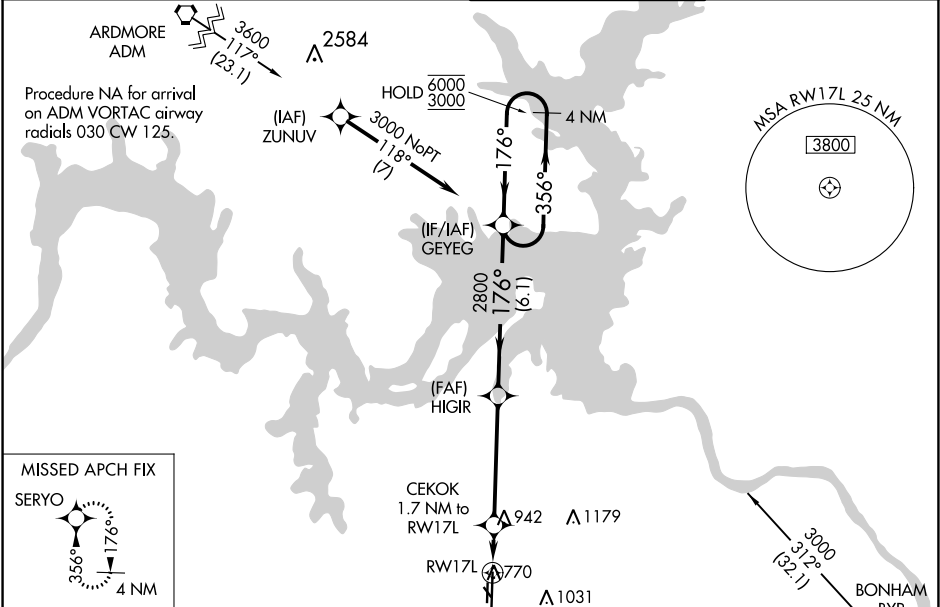


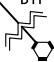



WAAS CH 86528 W17A	APP CRS 176°	Rwy Idg 9000 TDZE 741 Apt Elev 749
--	------------------------	---

RNAV (GPS) RWY 17L
NORTH TEXAS RGNL/PERRIN FIELD (GYI)

RNP APCH.	MALSR	MISSED APPROACH: Climb to 3000 direct SERYO and hold.
 Circling Rwy 13, 17R, 31, 35L NA at night. For uncompensated Baro-VNAV systems, LNAV/VNAV NA below -16°C or above 54°C. For inop ALS, increase LNAV/VNAV all Cats visibility to ½ SM.		

ATIS 118.775	FORT WORTH CENTER 124.75 323.0	NORTH TEXAS TOWER ★ 120.575 (CTAF) 233.7	GND CON 124.125
------------------------	--	--	---------------------------



<div>870° ↓</div>		<div>1249 △</div>		<div>Procedure NA for arrival on BYP VORTAC airway radials 264 CW 010.</div>		<div><div>BYP</div></div>
<div>3000 ↑</div>	<div>SERYO </div>	<div>VGSI and RNAV glidepath not coincident (VGSI angle 3.00/TCH 48).</div>		<div>4 NM Holding Pattern</div>		
<div>*LNAV only.</div>		<div>CEKOK 1.7 NM to RW17L</div>	<div>HIGIR 2800</div>	<div>GEYEG</div>	<div>356° → 6000 ← 176° 3000</div>	
<div></div>		<div>1.7 NM</div>	<div>4.6 NM</div>	<div>6.1 NM</div>	<div>GP 3.00° TCH 43</div>	
<div>*1320</div>		<div>2800</div>				
<div>CATEGORY</div>		<div>A</div>	<div>B</div>	<div>C</div>	<div>D</div>	
<div>LPV</div>	<div>DA</div>	<div>941-½</div>		<div>200 (200-½)</div>		
<div>LNAV/ VNAV</div>	<div>DA</div>	<div>1015-½</div>		<div>274 (300-½)</div>		
<div>LNAV MDA</div>		<div>1200-½ 459 (500-½)</div>		<div>1200-⅞ 459 (500-⅞)</div>		
<div> CIRCLING</div>		<div>1300-1 551 (600-1)</div>		<div>1400-1¾ 651 (700-1¾)</div>	<div>1540-2½ 791 (800-2½)</div>	

SC-2, 31 DEC 2020 to 28 JAN 2021

SC-2, 31 DEC 2020 to 28 JAN 2021