

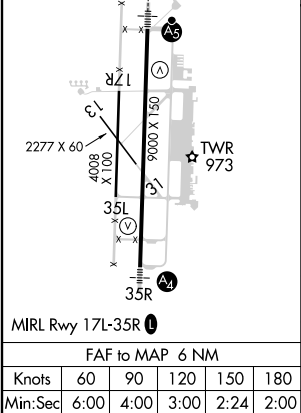
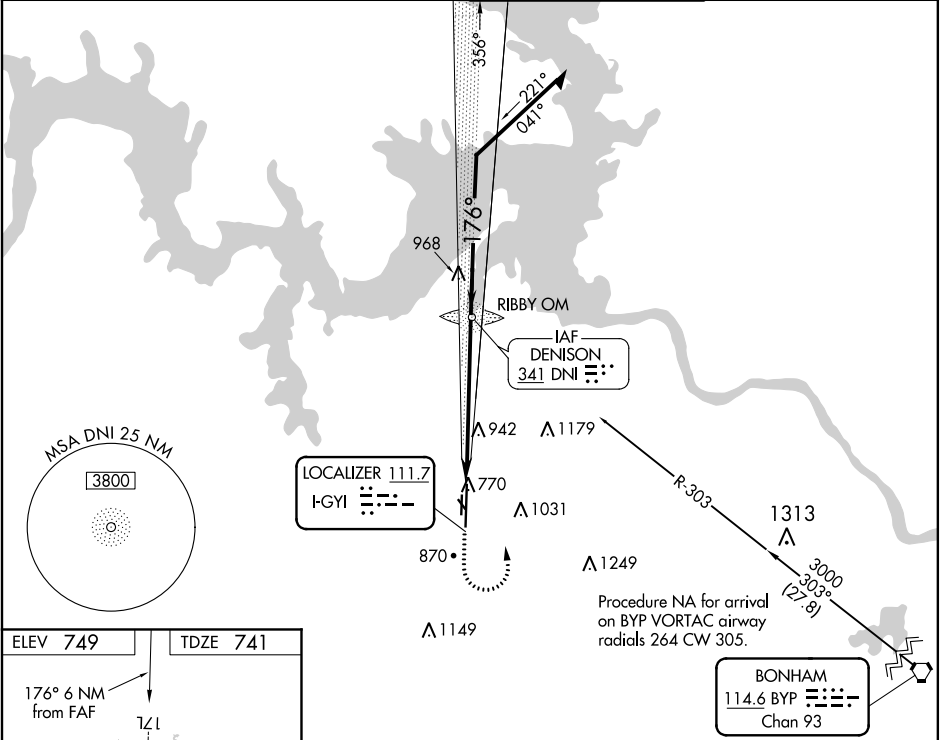
LOC I-GYI	APP CRS	Rwy Idg	9000
111.7	176°	TDZE	741
		Apt Elev	749

ILS or LOC RWY 17L

NORTH TEXAS RGNL/PERRIN FIELD (GYI)

ADF required.	MALSR	MISSED APPROACH: Climb to 2000 then climbing left turn to 2800 direct DNI NDB and hold.
<div><div>NA</div><div>Circling Rwy 13, 17R, 31, 35L NA at night. For inop ALS, increase S-LOC-17L Cat C/D visibility to 1½ SM.</div></div>	<div><div>A5</div><div></div></div>	

ATIS 118.775	FORT WORTH CENTER 124.75 323.0	NORTH TEXAS TOWER ★ 120.575 (CTAF) 233.7	GND CON 124.125
-----------------	-----------------------------------	---	--------------------



2000	2800	DNI	DNI NDB RIBBY OM	Remain within 10 NM
VGSI and ILS glidepath not coincident (VGSI Angle 3.00/TCH 48).				
<div><div>2740</div><div>356°</div><div>176°</div><div>2800</div><div>2800</div><div>GS 3.00° TCH 43</div><div>6 NM</div></div>				
CATEGORY	A	B	C	D
S-ILS 17L	941-½ 200 (200-½)			
S-LOC 17L	1240-½ 499 (500-½)		1240-1 499 (500-1)	
<div><div>CIRCLING</div></div>	1300-1 551 (600-1)		1400-1¾ 651 (700-1¾) 1540-2½ 791 (800-2½)	