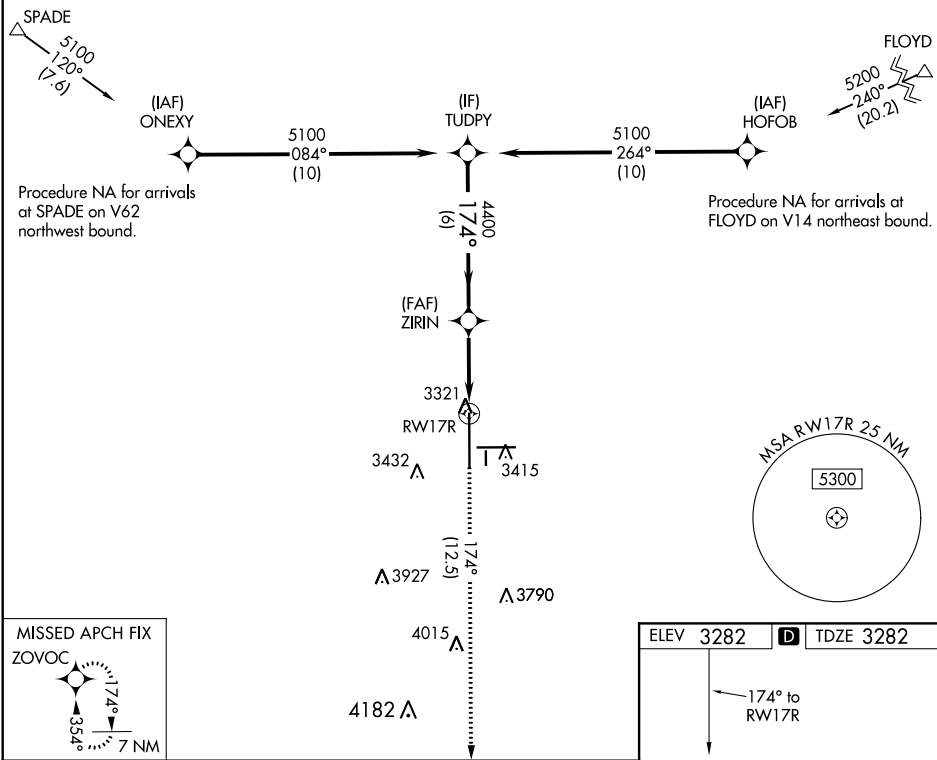


APP CRS <b>174°</b>	Rwy Idg <b>11500</b>
TDZE <b>3282</b>	
Apt Elev <b>3282</b>	

**RNAV (RNP) Z RWY 17R**  
LUBBOCK PRESTON SMITH INTL (LBB)

RNP APCH. ▼ For uncompensated Baro-VNAV systems, procedure NA below -12°C or above 51°C. For inop ALS, increase RNP 0.16 all Cnts visibility to RVR 4500 and increase RNP 0.30 all Cnts visibility to RVR 6000.	MALSR 	MISSED APPROACH: Climb to 5400 on track 174° to ZOVOC and hold.
--	-----------	---

ATIS <b>125.3 270.275</b>	LUBBOCK APP CON <b>119.2 351.8</b>	LUBBOCK TOWER <b>120.5 239.3</b>	GND CON <b>121.9 348.6</b>	CLNC DEL <b>125.8 281.55</b>
------------------------------	---------------------------------------	-------------------------------------	-------------------------------	---------------------------------



TUDPY 5100	VGSI and RNAV glidepath not coincident (VGSI Angle 3.00/TCH 69°).				5400 ZOVOC
174°		4400		tr 174°	
GP 3.00° TCH 52	6 NM		3.3 NM		RWY 17R
CATEGORY	A	B	C	D	
RNP 0.16 DA	3549/24		267 (300-½)		
RNP 0.30 DA	3639/40		357 (400-¾)		

**AUTHORIZATION REQUIRED**

