

WAAS  
CH **45528**  
**W26A**

APP CRS  
**264°**

Rwy Idg  
TDZE  
Apt Elev  
**8003**  
**3256**  
**3282**

**RNAV (GPS) RWY 26**

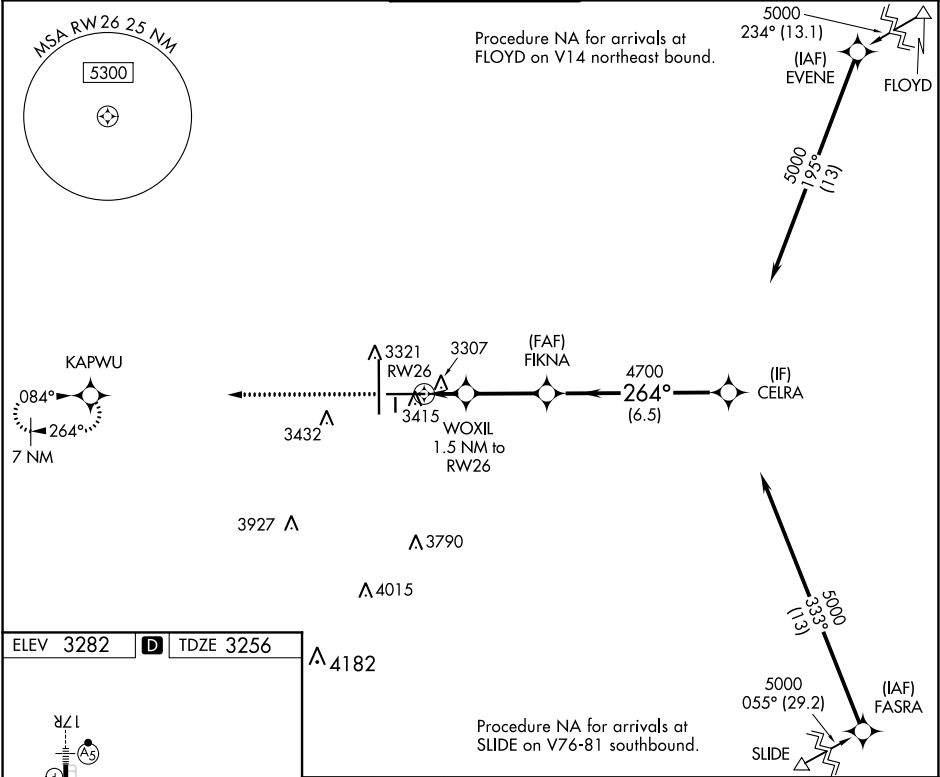
LUBBOCK PRESTON SMITH INTL (LBB)

RNP APCH.  
▼ For uncompensated Baro-VNAV systems, LNAV/VNAV NA below -10°C or above 52°C.  
▲ For inop ALS, increase LPV Cat E visibility to RVR 4000; increase LNAV/VNAV Cat E visibility to RVR 5000; and increase LNAV Cat C/D/E visibilities to RVR 4500.  
\*\*RVR 1800 authorized with use of FD or AP or HUD to DA.

MALSR

MISSED APPROACH:  
Climb to 5200 direct KAPWU and hold.

ATIS <b>125.3 270.275</b>	LUBBOCK APP CON <b>119.2 351.8</b>	LUBBOCK TOWER <b>120.5 239.3</b>	GND CON <b>121.9 348.6</b>	CLNC DEL <b>125.8 281.55</b>
------------------------------	---------------------------------------	-------------------------------------	-------------------------------	---------------------------------



ELEV 3282 **D** TDZE 3256

REIL Rwy 8  
HIRL Rwy 8-26 and 17R-35L

5200	KAPWU	WOXIL 1.5 NM to RW26	FIKNA 4700	CELRA 5000	
*INAV only.					
*0.8 NM to RW26					
*3780					
GP 3.00° TCH 50					
CATEGORY	A	B	C	D	E
LPV DA**	3456/24		200 (200-½)		
LNAV/VNAV DA	3579/26		323 (300-½)		
LNAV MDA	3560/24		304 (300-½)		
CIRCLING	3720-1 438 (500-1)	3740-1 458 (500-1)	3880-1½ 598 (600-1½)	3940-2 658 (700-2)	4100-3 818 (900-3)

LUBBOCK, TEXAS  
Amdt 3A 20JUN19

33°40'N-101°49'W

LUBBOCK PRESTON SMITH INTL (LBB)  
**RNAV (GPS) RWY 26**

SC-2, 31 DEC 2020 to 28 JAN 2021

SC-2, 31 DEC 2020 to 28 JAN 2021