

AL-160 [USN]

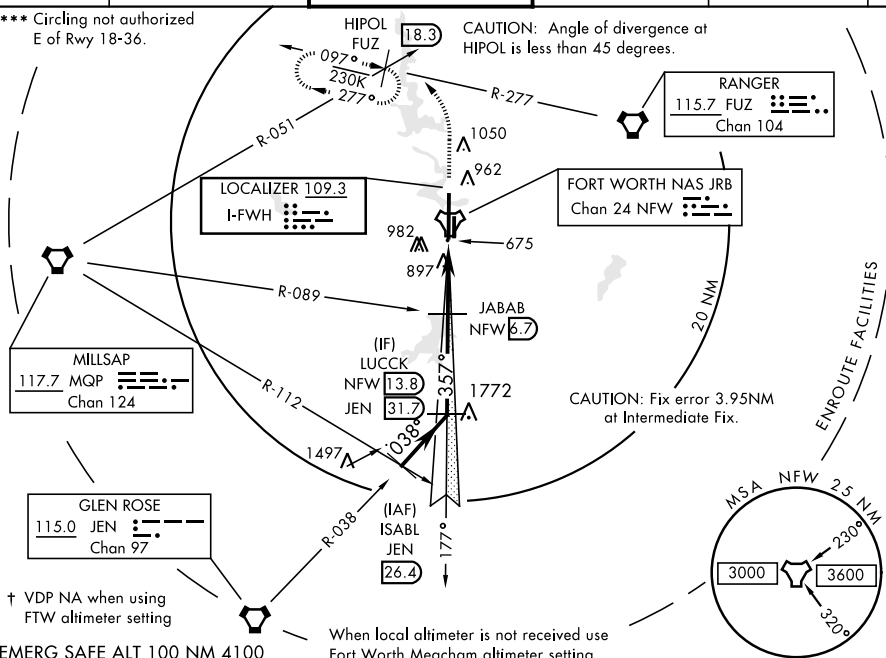
FORT WORTH NAS JRB (CARSWELL FLD) (KNFW)

T * When ALS inop, increase vis to $\frac{3}{4}$ mile.
 ** When ALS inop, increase CAT AB vis to 1 mile,
 CAT CDE vis to $1\frac{5}{8}$ mile.



MISSED APPROACH: Climb to 2000, then climbing left turn to 3000 heading 330° and FUZ VORTAC R-277 to HIPOL and hold.

*** Circling not authorized
E of Rwy 18-36.



EMERG SAFE ALT 100 NM 4100

When local altimeter is not received use Fort Worth Meacham altimeter setting.

2000	3000	HIPOL
↑	hdg 330°	

ISABL
MQP R-112
JEN R-038
JEN 26.4

LUCCK
JEN R-038
NFW 13.8

JABAB
MQP R-089
NFW 6.7

3000 — 038° — 3000 — 357° — 2481 — 2500 — 2000 — DOMPE — TACAN

GS 3.00°
TCH 59

2.7

1.6

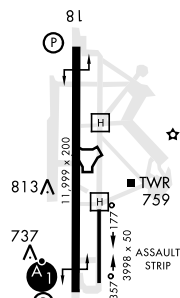
330°

CATEGORY		A	B	C	D	E
S-ILS 36 *		850-1/2		200	(200-1/2)	
S-LOC 36 **		1200-1/2	550 (600-1/2)	1200- 1 1/8 550 (600-1 1/8)		
CIRCLING ***	1240-1	1280-1	1320-1 3/4	1320-2	1440-2 3/4	
	590 (600-1)	630 (700-1)	670 (700-1 1/4)	670 (700-2)	790 (800-2 3/4)	

FORT WORTH MEACHAM ALTIMETER

S-ILS 36 *	870- $\frac{1}{2}$		220		(300- $\frac{1}{2}$)	
S-LOC 36 **	1220- $\frac{1}{2}$ 570 (600- $\frac{1}{2}$)		1220-1 $\frac{1}{4}$ 570 (600-1 $\frac{1}{4}$)			
*** CIRCLING	1260-1 610 (700-1)	1300-1 650 (700-1)	1340-2 690 (700-2)	1340-2 $\frac{1}{4}$ 690 (700-2 $\frac{1}{4}$)	1460-2 $\frac{3}{4}$ 810 (900-2 $\frac{3}{4}$)	

ELEV 650		TDZE 650
----------	--	----------

REIL Rwy 18 **L** 357° 5.7 NM

HIRL Rwy 18-36 **L** from FAF

LOC FAF to MAP 5.2 NM

Knots	60	90	120	150	180
Min:Sec	5:12	3:28	2:36	2:05	1:44