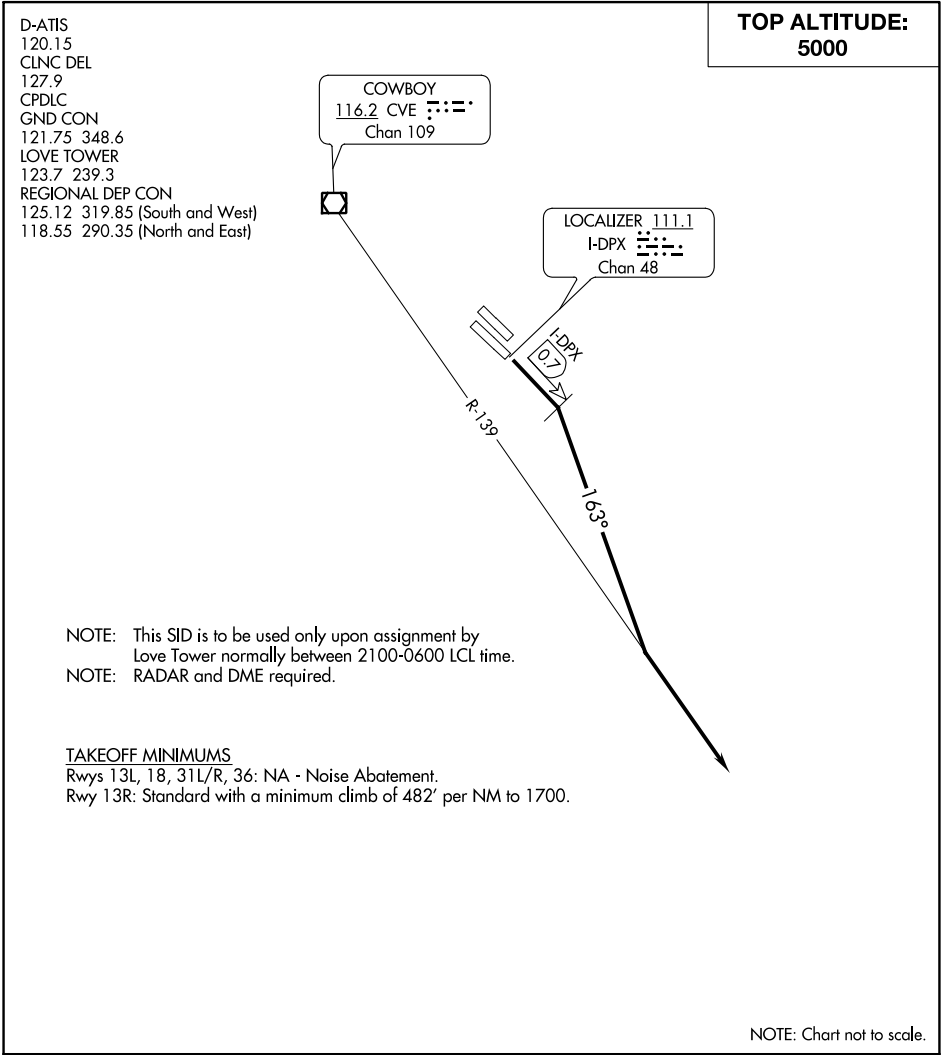



TRINITY EIGHT DEPARTURE





DEPARTURE ROUTE DESCRIPTION

TAKEOFF RWY 13R: Turn right heading 163° not later than 0.7 DME outbound on the I-DPX localizer southeast course, to intercept and climb on the CVE R-139 outbound. Expect vectors to appropriate route, unless otherwise advised maintain 5000 and expect filed altitude 10 minutes after departure.

SC-2, 31 DEC 2020 to 28 JAN 2021

SC-2, 31 DEC 2020 to 28 JAN 2021