

**TOP ALTITUDE:**  
**RWYS 13L/R: 8000**  
**RWYS 31L/R: 3000**

D-ATIS 120.15  
CLNC DEL 127.9  
CPDLC  
GND CON 121.75 348.6  
LOVE TOWER 123.7 239.3  
REGIONAL DEP CON 125.125 353.95

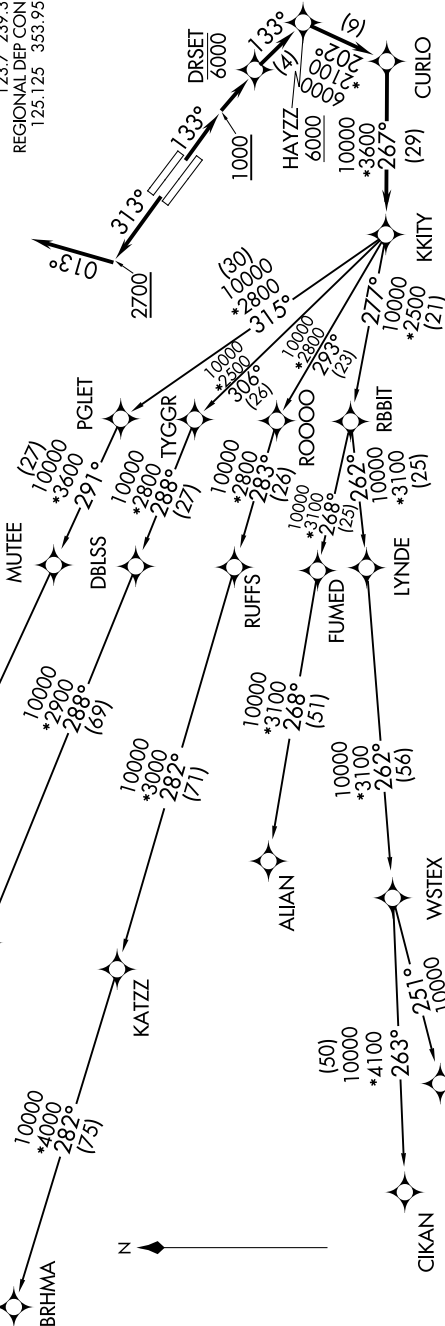
HUDAD

HUIZE

HRPER

KATZZ

BRHMA



**TAKEOFF MINIMUMS**  
RWys 13L/R: Standard with minimum climb of 500' per NM to 1200.  
RWys 31L/R: Standard with minimum climb of 500' per NM to 1000.

- NOTE: RADAR required.
- NOTE: DME/DME/IRU or GPS required.
- NOTE: RNAV 1.
- NOTE: For use by turbojet aircraft only.
- NOTE: RNAV-capable props: File and expect the SWABR RNAV SID.
- NOTE: ALLAN TRANSITION ATC assigned only.
- NOTE: BRHMA TRANSITION for aircraft inbound to Lubbock terminal area.
- NOTE: Use WORTH DEPARTURE during the period 2100-0600 local time in lieu of the KKIT5 DEPARTURE.
- NOTE: WSTEX TRANSITION: For aircraft inbound to Abilene and San Angelo terminal area airports only.

(NARRATIVE ON FOLLOWING PAGE)

NOTE: Chart not to scale.