

LOC/DME I-LVF	APP CRS	Rwy Idg	8000
111.1	313°	TDZE	477
Chan 48		Apt Elev	487

ILS or LOC RWY 31L
DALLAS LOVE FIELD (DAL)

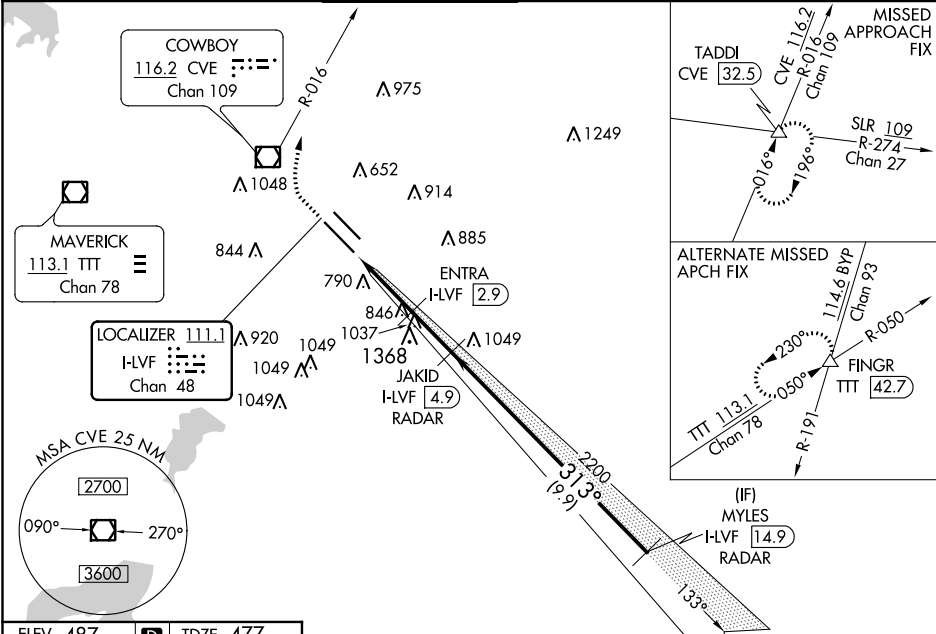
DME or RADAR required for LOC only.
RADAR required for procedure entry.

MALSRR
AS

MISSED APPROACH: Climb to 4000 direct CVE VOR/DME
and on CVE R-016 to TADDI INT/ CVE 32.5 DME and hold.

Simultaneous approach authorized.

D-ATIS 120.15	REGIONAL APP CON NORTH 124.3 282.275 SOUTH 125.2 343.65	LOVE TOWER 123.7 239.3	GND CON 121.75 348.6	CLNC DEL 127.9	CPDLC
-------------------------	---	----------------------------------	--------------------------------	--------------------------	-------



ELEV 487	D	TDZE 477	4000	CVE	CVE R-016	TADDI	JAKID I-LVF 4.9 RADAR	MYLES I-LVF 14.9 RADAR
*LOC only.								
CATEGORY A B C D								
S-ILS 31L 677/18 200 (200-1/2)								
S-LOC 31L 1520/40 1043 (1100-3/4) 1520/55 1043 (1100-1) 1520-2 1/2 1043 (1100-2 1/2)								
CIRCLING 1520-1 1/4 1033 (1100-1 1/4) 1520-1 1/2 1033 (1100-1 1/2) 1520-3 1033 (1100-3)								
ENTRA FIX MINIMUMS (DME REQUIRED)								
S-LOC 31L 1160/24 683 (700-1/2) 1160-1 1/2 683 (700-1 1/2)								
CIRCLING 1160-1 673 (700-1) 1220-2 733 (800-2) 1520-3 1033 (1100-3)								

SC-2, 31 DEC 2020 to 28 JAN 2021

SC-2, 31 DEC 2020 to 28 JAN 2021