

LOC/DME I-OVW	APP CRS	Rwy Idg	6952
111.5	313°	TDZE	487
Chan 52		Apt Elev	487

ILS RWY 31R (SA CAT I & II)

DALLAS LOVE FIELD (DAL)

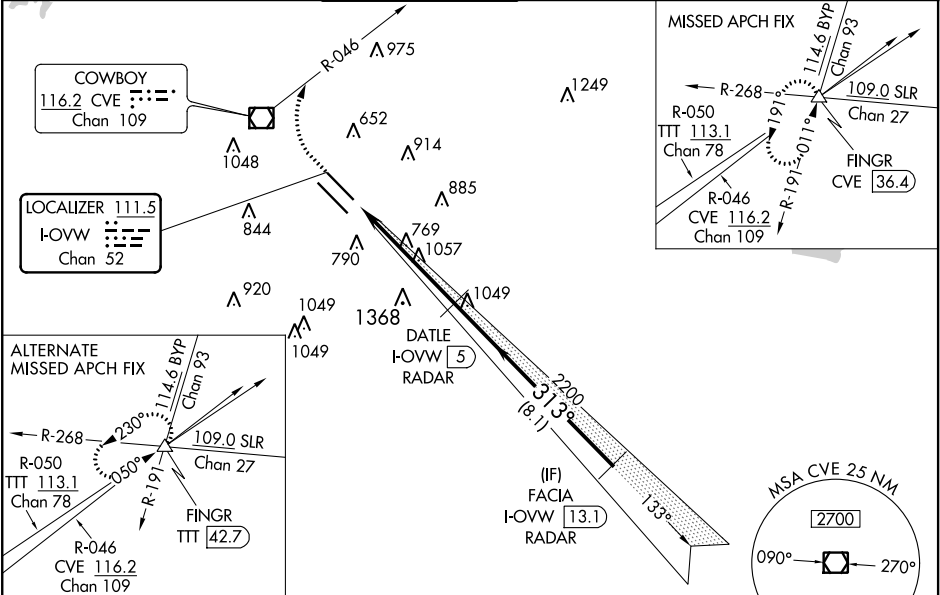
DME or RADAR required for LOC only. RADAR required for procedure entry.

- ▼ Simultaneous approach authorized.
- ▲ SA CAT I: Requires specific OPSPEC, MSPEC or LOA approval and use of HUD to DH.
- SA CAT II: Reduced Lighting: Requires specific OPSPEC, MSPEC or LOA approval and use of autoland or HUD to touchdown.

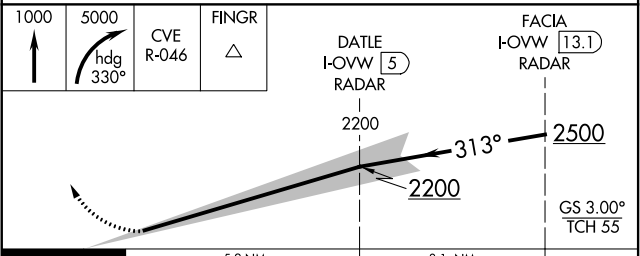
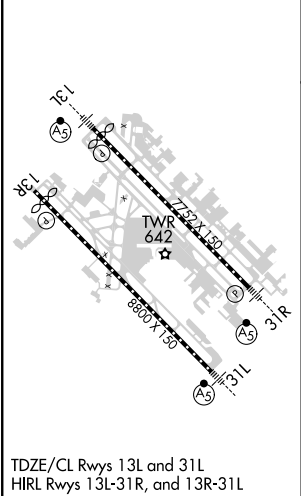


MISSED APPROACH: Climb to 1000 then climbing right turn to 5000 on heading 330° and CVE VOR/DME R-046 to FINGR INT/CVE 36.4 DME and hold.

D-ATIS	REGIONAL APP CON	LOVE TOWER	GND CON	CLNC DEL	CPDLC
120.15	NORTH 124.3 282.275 SOUTH 125.2 343.65	123.7 239.3	121.75 348.6	127.9	



ELEV 487	D	TDZE 487
----------	---	----------



CATEGORY	A	B	C	D
S-ILS 31R	SA CAT I	RA 151/14	150 DA 637	
S-ILS 31R	SA CAT II	RA 98/12	100 DA 587	

SA CATEGORY I & II ILS - SPECIAL AIRCREW

& AIRCRAFT CERTIFICATION REQUIRED