

CURLO FIVE DEPARTURE (RNAV)

DALLAS, TEXAS

TOP ALTITUDE:
RWY 13L/R: 8000
RWY 31L/R: 3000

NOTE: RADAR required.

NOTE: DME/DME/IRU or GPS required.

NOTE: RNAV 1.

NOTE: For use by turbojet aircraft only.

NOTE: Props file and expect JOE POOL DEPARTURE.

NOTE: WACO TRANSITION for aircraft inbound to Waco or Gray terminal area airports.

NOTE: SAN ANTONIO TRANSITION for aircraft overflying Centex and San Antonio.

NOTE: WINDU TRANSITION for aircraft inbound to Austin or San Antonio terminal area airports. Aircraft should file and/or expect BLEWE or MARCS STAR at WINDU.

NOTE: COLLEGE STATION TRANSITION for aircraft inbound to west Houston terminal area airports.

NOTE: ELLVR TRANSITION for aircraft inbound to Houston
HOBBY, EFD, GLS, and LBX.

NOTE: TORNN TRANSITION for aircraft landing Lafayette, Lake Charles, or Beaumont/Port Arthur airports.

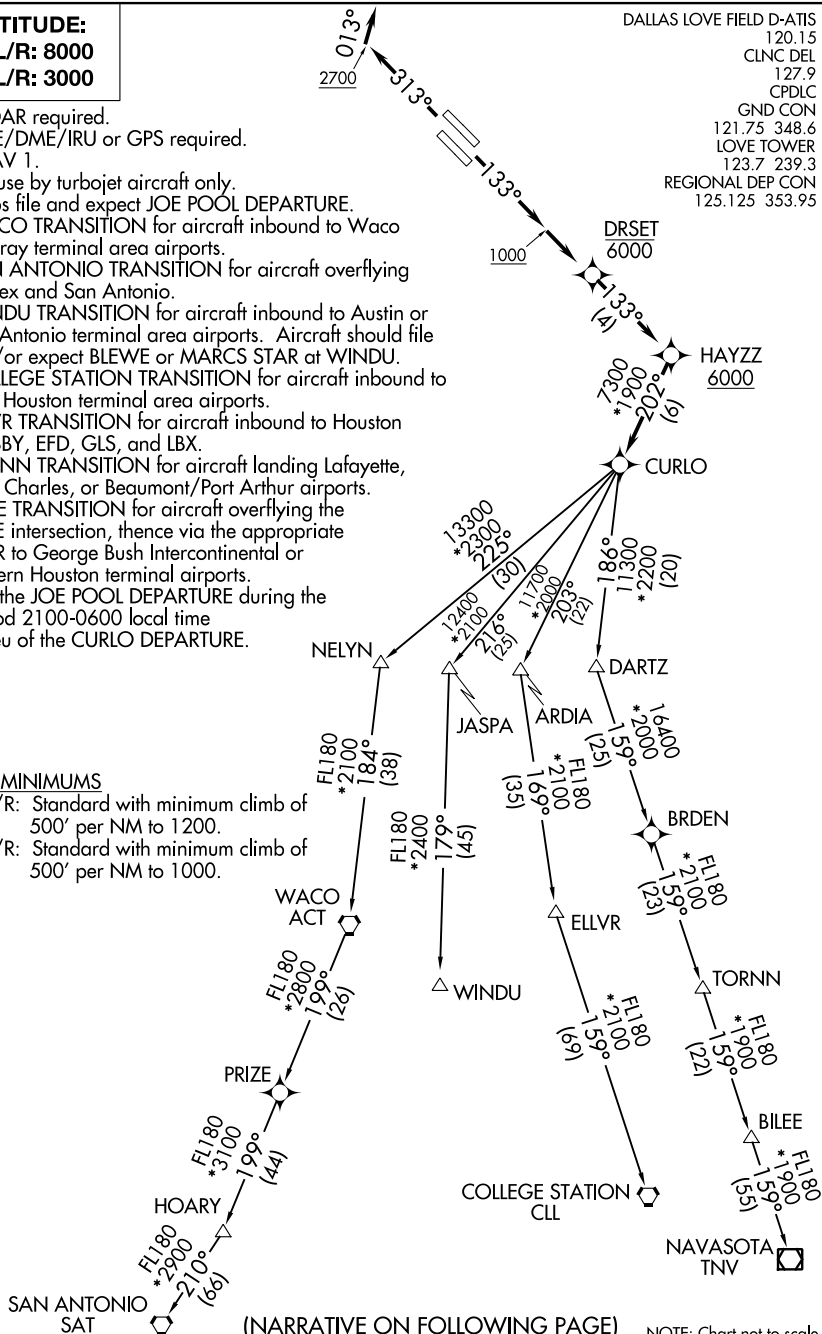
NOTE: BILEE TRANSITION for aircraft overflying the BILEE intersection, thence via the appropriate STAR to George Bush Intercontinental or eastern Houston terminal airports.

NOTE: Use the JOE POOL DEPARTURE during the period 2100-0600 local time in lieu of the CURLO DEPARTURE.

TAKEOFF MINIMUMS

Rwys 13L/R: Standard with minimum climb of 500' per NM to 1200.

Rwys 31L/R: Standard with minimum climb of 500' per NM to 1000.



NOTE: Chart not to scale.

CURLO FIVE DEPARTURE (RNAV)

DALLAS, TEXAS

(CURLO5.CURLO) 05DEC19

DALLAS LOVE FIELD (DAL)

SC-2, 31 DEC 2020 to 28 JAN 2021

SC-2, 31 DEC 2020 to 28 JAN 2021