



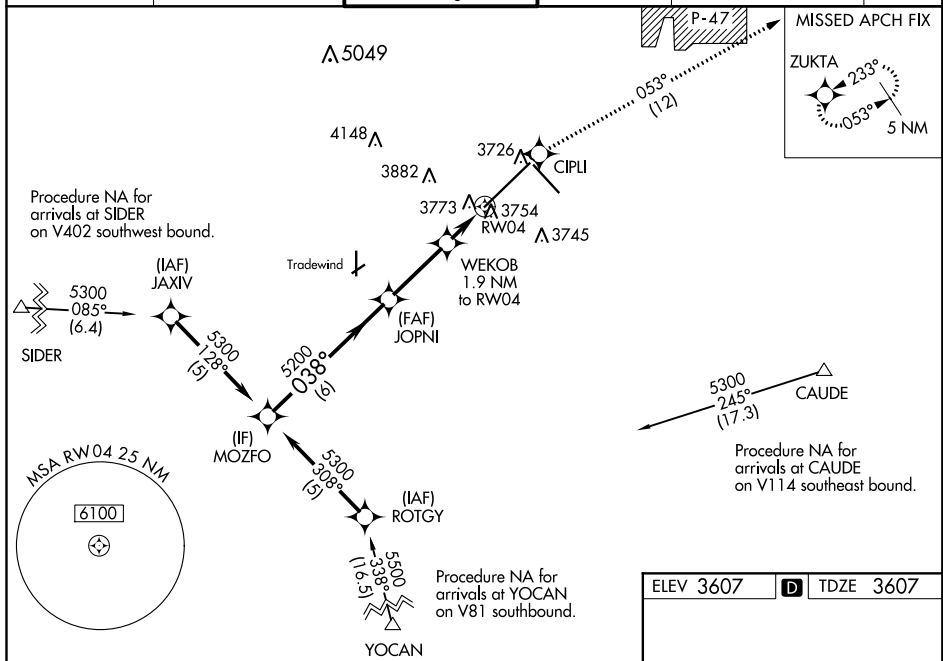
RNAV (GPS) Y RWY 4

RICK HUSBAND AMARILLO INTL (AMA)

 ASR	<p>For uncompensated Baro-VNAV systems, LNAV/VNAV NA below -22°C or above 41°C. For inop ALS, increase LPV Cat E visibility to RVR 4000, and LNAV/VNAV and LNAV Cat E to 1¼ SM.</p> <p>** RVR 1800 authorized with use of FD or AP or HUD to DA.</p>	 MALSR	<p>MISSED APPROACH: Climb to 5400 direct CIPL and on track 053° to ZUKTA and hold.</p>
---	---	---	---

MALSR
A5

MISSED APPROACH: Climb to 5400
direct CIPLI and on track 053° to
ZUKTA and hold.



MOZFO

JOPNI

WEKOB

RW04

5300

038°

5200

1.9 NM to RW04

1.1 NM to RW04

4240

GP 3.00° TCH 44

*LNAV only.

CATEGORY	A	B	C	D	E
LPV DA **	3807/24		200 (200-½)		
RNAV/ VNAV DA	4028/50		421 (500-1)		
RNAV MDA	4040/24	433 (500-½)	4040/40 433 (500-¾)	4040/50	433 (500-1)
C CIRCLING	4080-1	473 (500-1)	4240-1¼ 633 (700-1¾)	4280-2¼ 673 (700-2¼)	4460-3 853 (900-3)

