

WAAS CH 82319 W31A	APP CRS 310°	Rwy Idg TDZE Apt Elev	7901 3601 3607
--	------------------------	-----------------------------	---

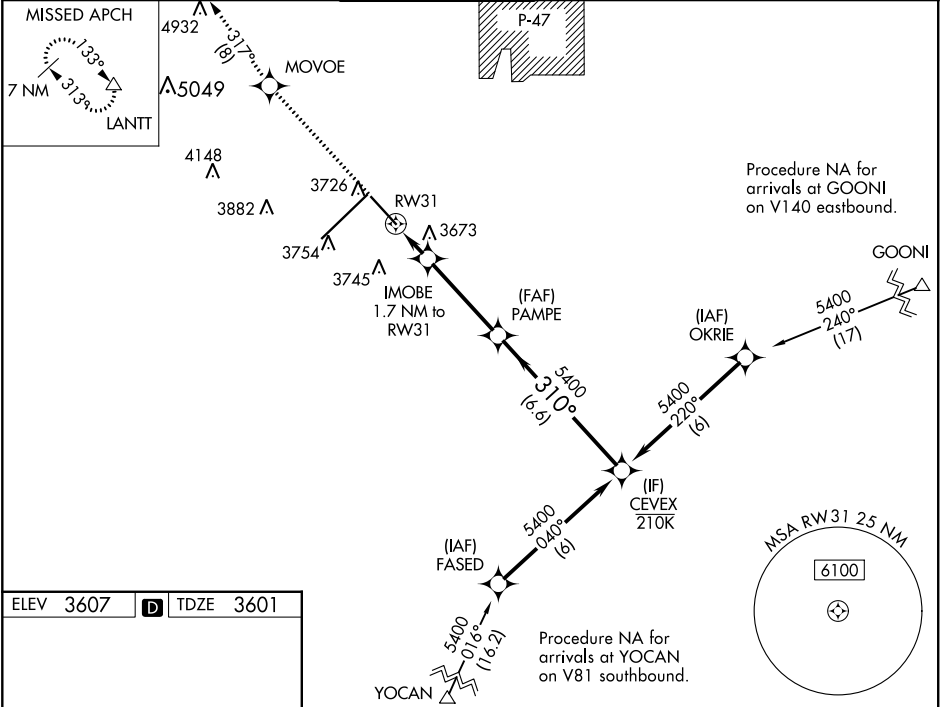
RNAV (GPS) Y RWY 31
RICK HUSBAND AMARILLO INTL (AMA)

⚠ DME/DME RNP-0.3 NA. For uncompensated Baro-VNAV systems, LNAV/VNAV NA below -14°C (7°F) or above 46°C (116°F). When local altimeter setting not received, use Borger altimeter setting: increase DA to 4004 and all visibilities ½ mile; increase all MDA 160 feet and visibility Cat C and D ½ mile. Baro-VNAV and VDP NA when using Borger altimeter setting.

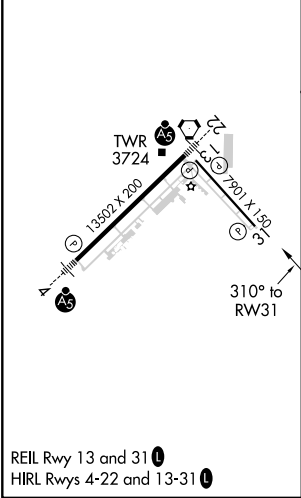
ASR

MISSED APPROACH: Climb to 6100 direct MOVEO and on track 317° to LANIT and hold.

ATIS 118.85 350.3	AMARILLO APP CON★ 119.5 307.0	AMARILLO TOWER★ 118.3 (CTAF) 257.9	GND CON 121.9 348.6	CLNC DEL 121.65 239.275	UNICOM 122.95
-----------------------------	---	--	-------------------------------	-----------------------------------	-------------------------



ELEV 3607	D	TDZE 3601
-----------	----------	-----------



6100	MOVEO	tr 317°	LANIT
*LNAV only.			
RW31 0.9 NM to RW31, IMOBE 1.7 NM to RW31, PAMPE 5400, CEVEX 5400, 310°, GP 3.04° TCH 52			
CATEGORY A B C D			
LPV DA 3851-¾ 250 (300-¾)			
LNAV/VNAV DA 3851-¾ 250 (300-¾)			
LNAV MDA 3940-1 339 (400-1)			
C CIRCLING 4080-1 473 (500-1) 4240-1¾ 633 (700-1¾) 4280-2¼ 673 (700-2¼)			

SC-2, 31 DEC 2020 to 28 JAN 2021

SC-2, 31 DEC 2020 to 28 JAN 2021