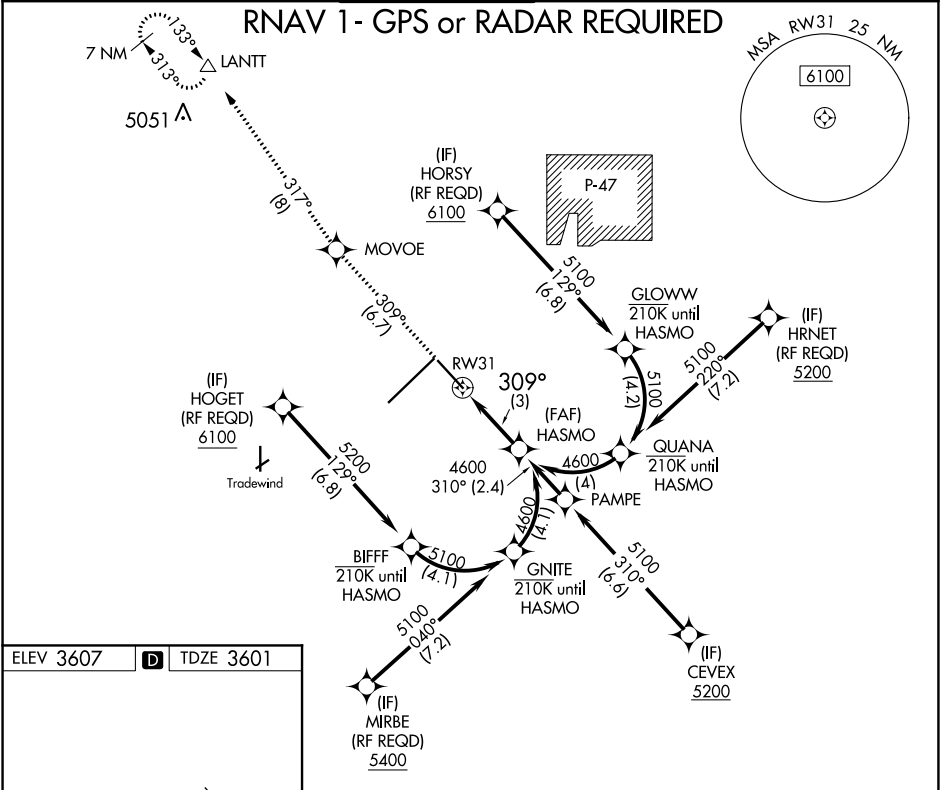


APP CRS	Rwy Idg	7901
309°	TDZE	3601
	Apt Elev	3607

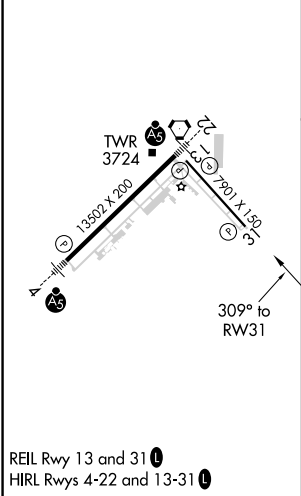
RNAV (RNP) Z RWY 31
RICK HUSBAND AMARILLO INTL (AMA)

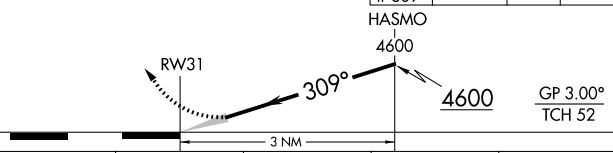
▼ For uncompensated Baro-VNAV systems, procedure NA below ASR -14°C (7°F) or above 51°C (124°F). GPS required.	MISSED APPROACH: Climb to 6200 on track 309° to MOVOE and track 317° to LANTT and hold.
--	---

ATIS 118.85 350.3	AMARILLO APP CON★ 119.5 307.0	AMARILLO TOWER★ 118.3(CTAF) 257.9	GND CON 121.9 348.6	CLNC DEL 121.65 239.275	UNICOM 122.95
----------------------	----------------------------------	--------------------------------------	------------------------	----------------------------	------------------



ELEV 3607	D	TDZE 3601
-----------	---	-----------



See planview for multiple IF locations.				6200 ↑ tr 309°	MOVOE ✦ tr 317°	LANTT △
				GP 3.00° TCH 52		
CATEGORY	A	B	C	D		
RNP 0.30 DA	3930-1½ 329 (400-1½)					
AUTHORIZATION REQUIRED						