

ABILENE, TEXAS

VOR/DME RWY 34

VOR/DME TQA 111.6 Chan 53	APCH CRS 340°	Rwy Idg 13,500 TDZE 1788 Arpt Elev 1790
---	-------------------------	--

AL-2 [USAF]

DYESS AFB (KDYS)

* When ALS inop, increase CAT AB RVR to 55 and vis to 1 mile, CAT CDE RVR vis to 1 3/8 miles.

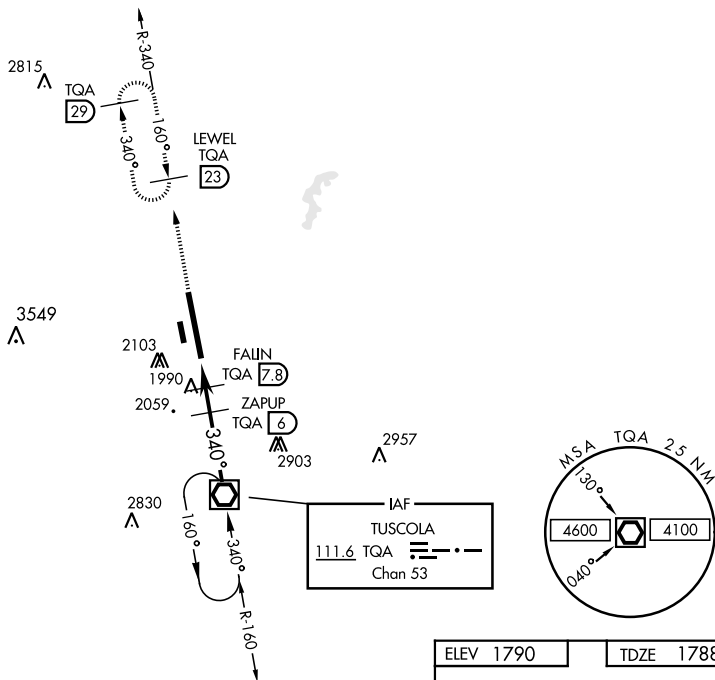
** Circling to other than Rwy 16 NA

ALSF-1

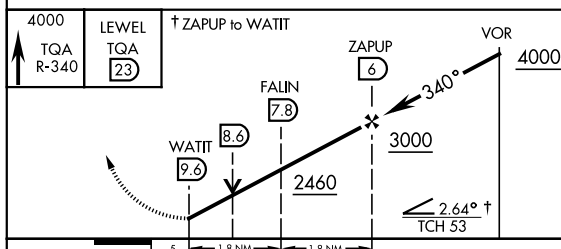



MISSED APPROACH: Climb to 4000 via TQA VOR/DME R-340 to LEWEL and hold.

ATIS ★ 269.175	ABILENE APP CON 125.0 338.3 EAST 127.2 282.3 WEST	DYESS TOWER 133.0 257.675	GND CON 118.35 275.8	ASR
-------------------	---	------------------------------	-------------------------	-----



EMERG SAFE ALT 100 NM 4600



CATEGORY		A	B	C	D	E	LRL Rwy 164°-344° HRL Rwy 16-34		340° 4.1 NM from FAF		
S-34 *		2260/24 472 (500-½)		2260/50 472 (500-1)			FAF to MAP 3.6 NM				
 CIRCLING **	2300-1 510 (600-1)	2320-1 530 (600-1)	2460-1¾ 670 (700-1¾)	2460-2 670 (700-2)	2460-2¼ 670 (700-2¼)	Knots	60	90	120	150	180
						Min:Sec	3:36	2:24	1:48	1:26	1:12

ABILENE, TEXAS

32°25' -99°51'W

DYESS AFB (KDYS)

VOR/DME RWY 34

SC-2, 31 DEC 2020 to 28 JAN 2021

SC-2, 31 DEC 2020 to 28 JAN 2021