

ABILENE, TEXAS

TACAN W RWY 34

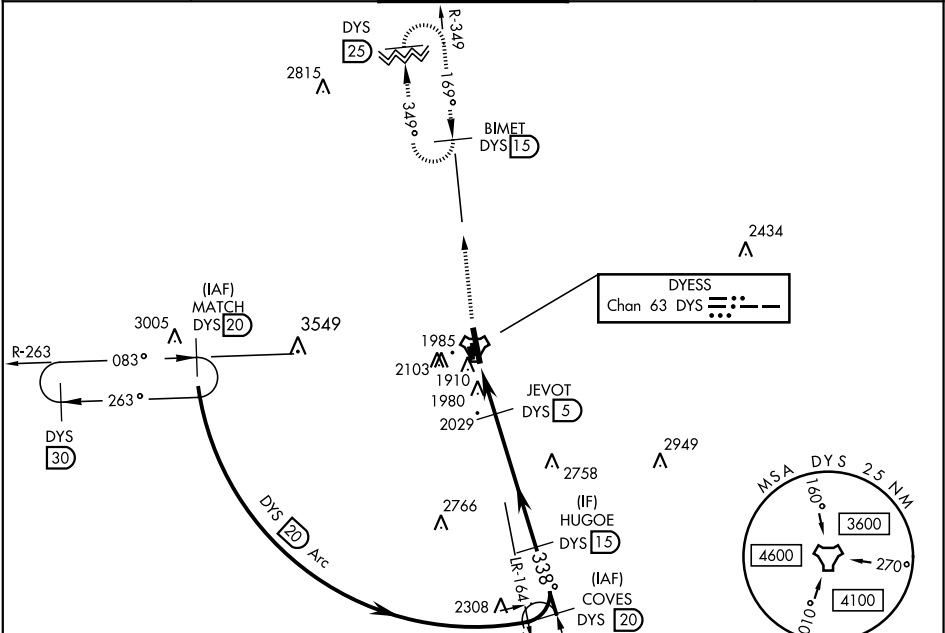
TACAN	DYS	APCH CRS	Rwy Idg
Chan 63		338°	13,500
		TDZE	1788
		Arpt Elev	1790

AL-2 [USAF]

DYESS AFB (KDYS)

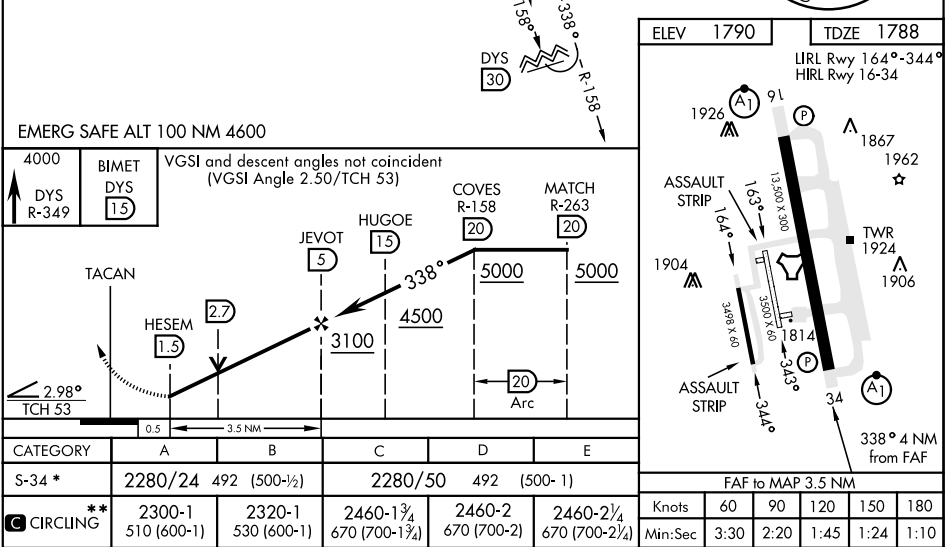
* When ALS inop, increase CAT AB RVR to 55 and vis to 1 mile, CAT CDE vis to 1½ miles. ** Circling to other than RWY 16 NA		ALSF-1 	MISSED APPROACH: Climb to 4000 via DYS TACAN R-349 to BIMET and hold.
---	--	------------	--

ATIS ★ 269.175	ABILENE APP CON 125.0 338.3 EAST 127.2 282.3 WEST	DYESS TOWER 133.0 257.675	GND CON 118.35 275.8	ASR
-------------------	---	------------------------------	-------------------------	-----



SC-2, 31 DEC 2020 to 28 JAN 2021

SC-2, 31 DEC 2020 to 28 JAN 2021



ABILENE, TEXAS

32°25'N-99°51'W

DYESS AFB (KDYS)

Amtd 3 10NOV16

TACAN W RWY 34