

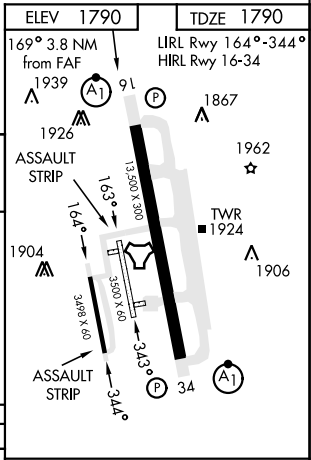
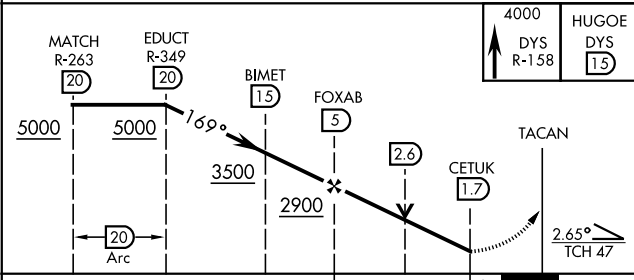
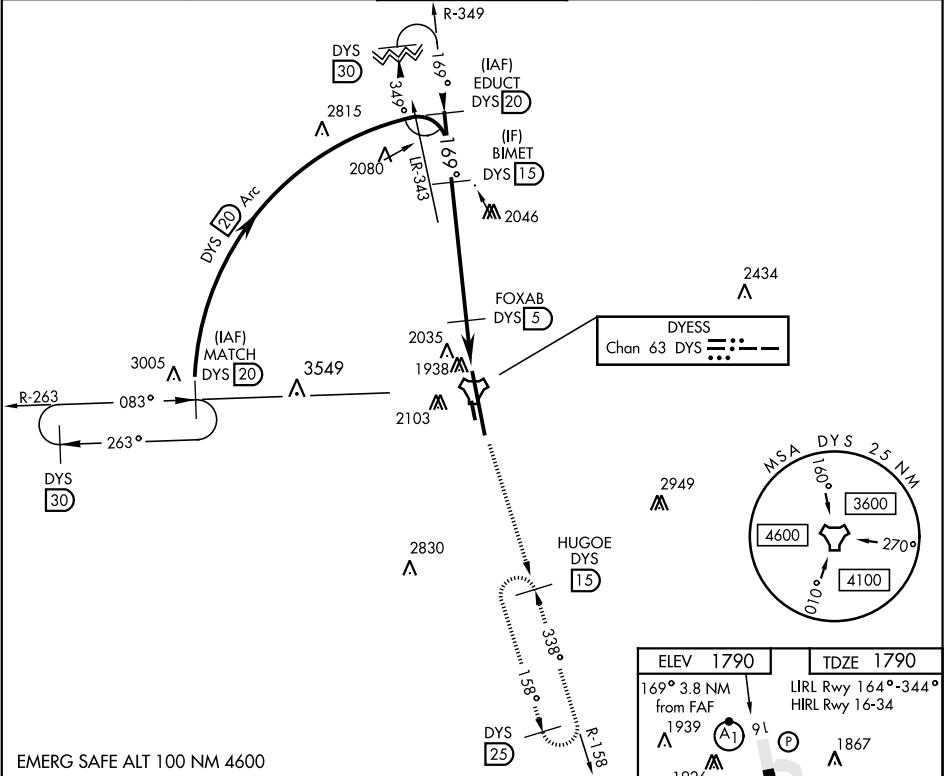
TACAN W RWY 16


TACAN	DYS	APCH CRS	Rwy Idg
Chan 63	169°	169°	13,500
		TDZE	1790
		Arprt Elev	1790

AL-2 [USAF]

DYESS AFB (KDYS)

* When ALS inop, increase CAT AB RVR to 55 and vis to 1 mile, CAT CDE vis to 1¼ miles. ** Circling to other than RWY 34 NA		ALS-F-1 	MISSED APPROACH: Climb to 4000 via DYS TACAN R-158 to HUGOE and hold.	
ATIS ★ 269.175	ABILENE APP CON 125.0 338.3 EAST 127.2 282.3 WEST	DYESS TOWER 133.0 257.675	GND CON 118.35 275.8	ASR



CATEGORY	A	B	C	D	E						
S-16 *	2220/24	430 (500-½)	2220/40	430 (500-¾)		FAF to MAP 3.3 NM					
 CIRCLING **	2300-1	2320-1	2460-1¾	2460-2	2460-2¼	Knots	60	90	120	150	180
	510 (600-1)	530 (600-1)	670(700-1¾)	670 (700-2)	670 (700-2¼)	Min:Sec	3:18	2:12	1:39	1:19	1:06

TACAN W RWY 16

SC-2, 31 DEC 2020 to 28 JAN 2021

SC-2, 31 DEC 2020 to 28 JAN 2021