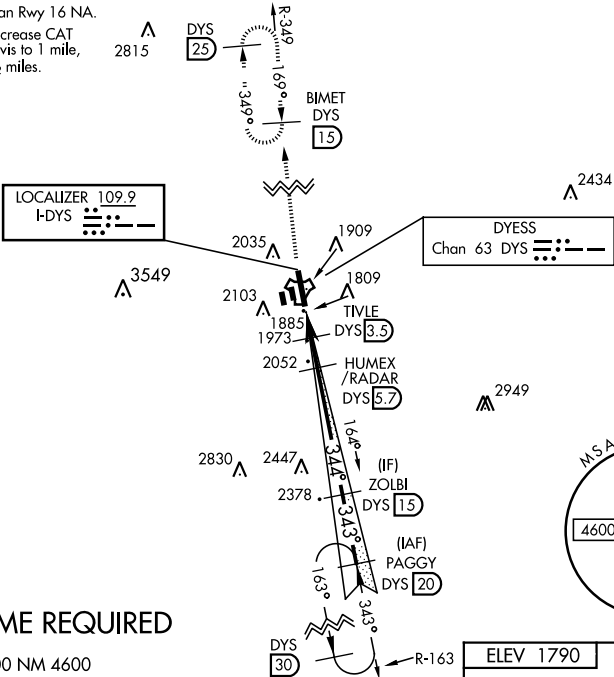


ILS or LOC W RWY 34

LOC I-DYS <b>109.9</b>	APCH CRS <b>344°</b>	Rwy Idg <b>13,500</b> TDZE <b>1788</b> Arpt Elev <b>1790</b>	AL-2 [USAF]	DYESS AFB (KDYS)
* When ALS inop, increase all CAT RVR to 40 and vis to ¾ mile. ** When ALS inop, increase CAT AB RVR to 55 and vis to 1 mile, CAT CDE vis to 1½ miles.			ALSF-1 	MISSED APPROACH: Climb to 4000 via DYS TACAN R-349 to BIMET and hold.
ATIS ★ <b>269.175</b>	ABILENE APP CON <b>125.0 338.3</b> EAST <b>127.2 282.3</b> WEST	DYESS TOWER <b>133.0 257.675</b>	GND CON <b>118.35 275.8</b>	ASR

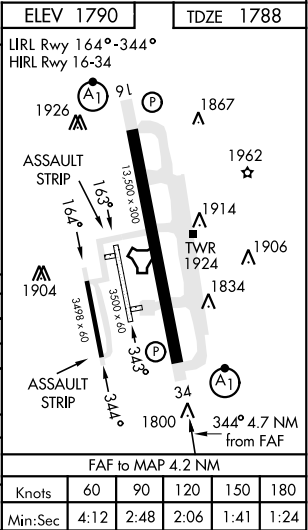
\*\*\* Circling to other than Rwy 16 NA.  
\*\*\*\* When ALS inop, increase CAT  
AB RVR to 55 and vis to 1 mile,  
CAT CDE vis to 1½ miles.



RADAR or DME REQUIRED

EMERG SAFE ALT 100 NM 4600

4000 DYS R-349	BIMET DYS 15	†LOC only	HUMEX /RADAR 5.7	ZOLBI 15	PAGGY 20	5000
TACAN	HEPEN 1.5	TIVLE 2.5	3100	344°	343°	4300
2500	3100	344°	343°	343°	343°	343°
GS 2.50°	TCH 51					
CATEGORY	A	B	C	D	E	
S-ILS 34*	1988/24		200		(200-½)	
S-LOC 34**	2240/24	452 (500-½)	2240/45	452 (500-¾)		
CIRCLING***	2300-1 510 (600-1)	2320-1 530 (600-1)	2460-1¾ 670 (700-1¾)	2460-2 670 (700-2)	2460-2¼ 670 (700-2¼)	
WITHOUT LAST STEPDOWN FIX						
S-LOC 34****	2320/24	532 (600-½)	2320/55	532 (600-1)		
CIRCLING***	2320-1	530 (600-1)	2460-1¾ 670 (700-1¾)	2460-2 670 (700-2)	2460-2¼ 670 (700-2¼)	



ILS or LOC W RWY 34

SC-2, 31 DEC 2020 to 28 JAN 2021

SC-2, 31 DEC 2020 to 28 JAN 2021