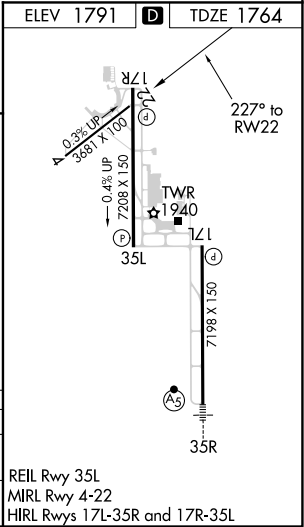
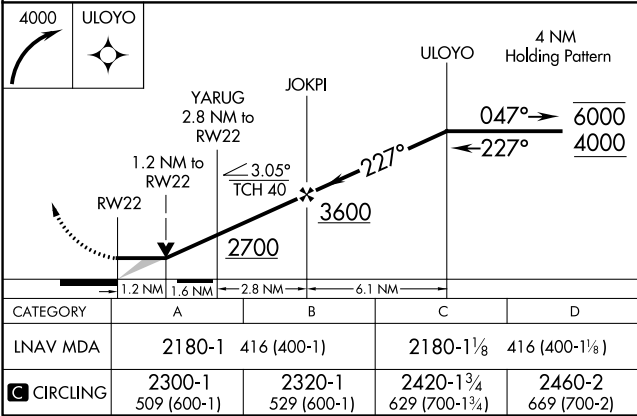
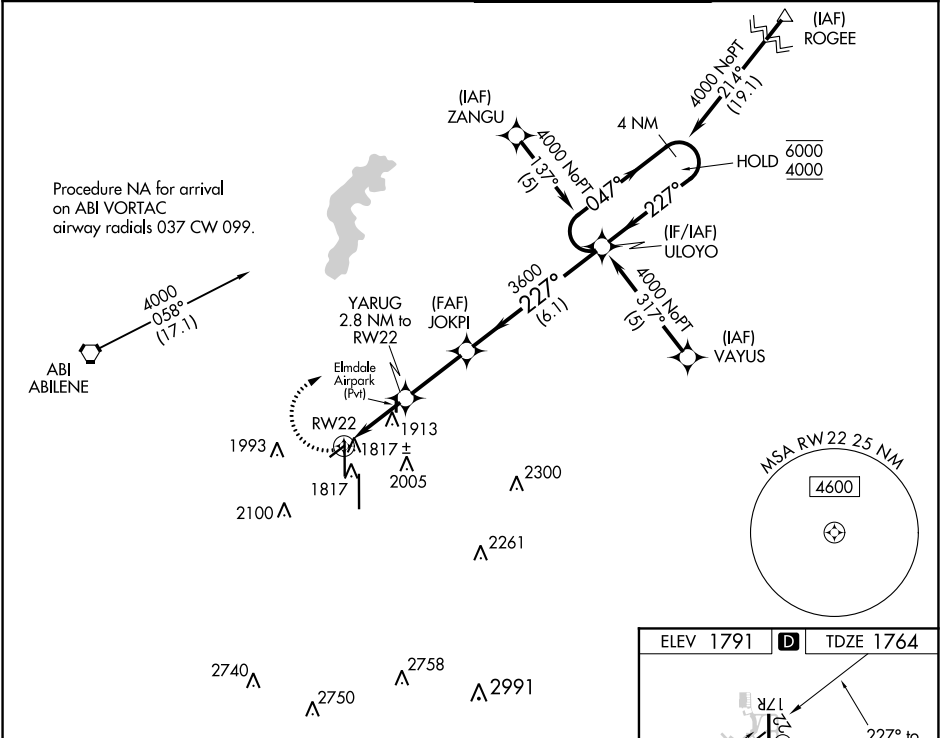


APP CRS	Rwy Idg	3678
227°	TDZE	1764
	Apt Elev	1791

RNAV (GPS) RWY 22

ABILENE RGNL (ABI)

RNP APCH.		MISSED APPROACH: Climbing right turn to 4000 direct ULOYO and hold.	
ATIS 118.25	ABILENE APP CON 125.0 338.3 (EAST) 127.2 282.3 (WEST)	ABILENE TOWER 120.1 257.8	GND CON 121.7 348.6



SC-2, 31 DEC 2020 to 28 JAN 2021

SC-2, 31 DEC 2020 to 28 JAN 2021