

WAAS CH <b>77538</b> <b>W22A</b>	APP CRS <b>224°</b>	Rwy Idg <b>5500</b> TDZE <b>276</b> Apt Elev <b>276</b>
--	------------------------	---

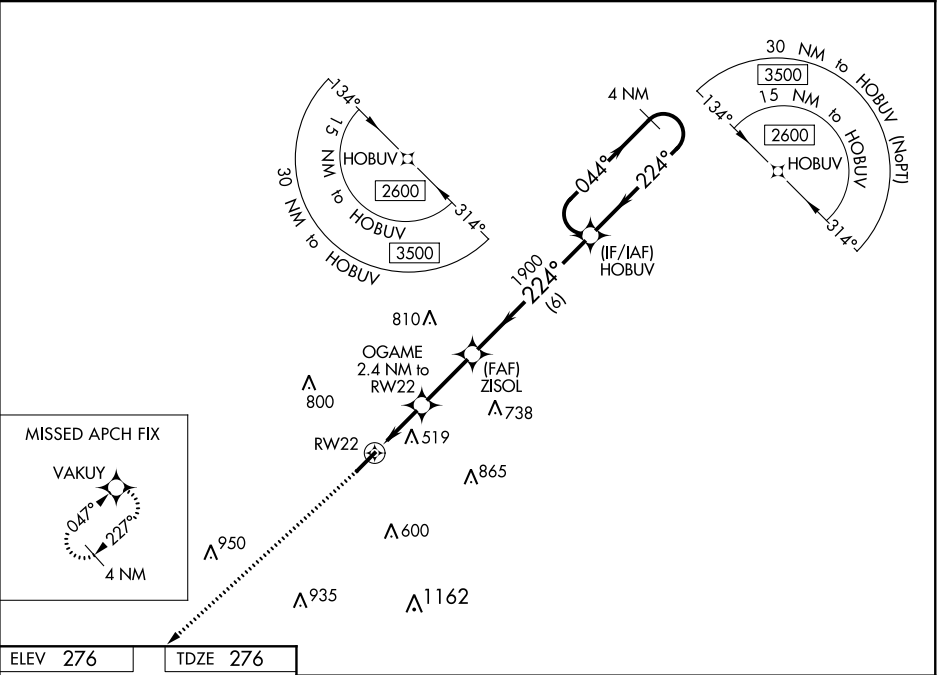
RNAV (GPS) RWY 22

CONWAY RGNL (CXW)

**Baro-VNAV NA.**  
Use Bill and Hillary Clinton National/Adams Field altimeter setting; when not received, procedure NA.  
DME/DME RNP-0.3 NA.

MISSED APPROACH: Climb to 3000 direct VAKUY and hold.

AWOS-2 <b>118.775</b>	LITTLE ROCK APP CON <b>135.4 353.6</b> (040°-239°) <b>119.5 306.2</b> (240°-039°)	CLNC DEL <b>121.2</b>	UNICOM <b>123.05</b> (CTAF) <b>0</b>
--------------------------	---	--------------------------	---



ELEV 276	TDZE 276	3000	VAKUY	4 NM Holding Pattern
<p>224° to RW22</p> <p>*LNAV only.</p> <p>OGAME 2.4 NM to RW22</p> <p>ZISOL 1900</p> <p>HOBUV</p> <p>044° → 2600</p> <p>← 224°</p> <p>GP 3.00° TCH 40</p> <p>2.4 NM 2.6 NM 6 NM</p>				
CATEGORY	A	B	C	D
LPV DA	533-7/8 257 (300-7/8)			
LNAV/VNAV DA	853-2 577 (600-2)			
LNAV MDA	780-1 504 (600-1)		780-1 3/8 504 (600-1 3/8)	
CIRCLING	1000-1 724 (800-1)		1000-2 724 (800-2)	1380-3 1104 (1200-3)

SC-1, 31 DEC 2020 to 28 JAN 2021

SC-1, 31 DEC 2020 to 28 JAN 2021