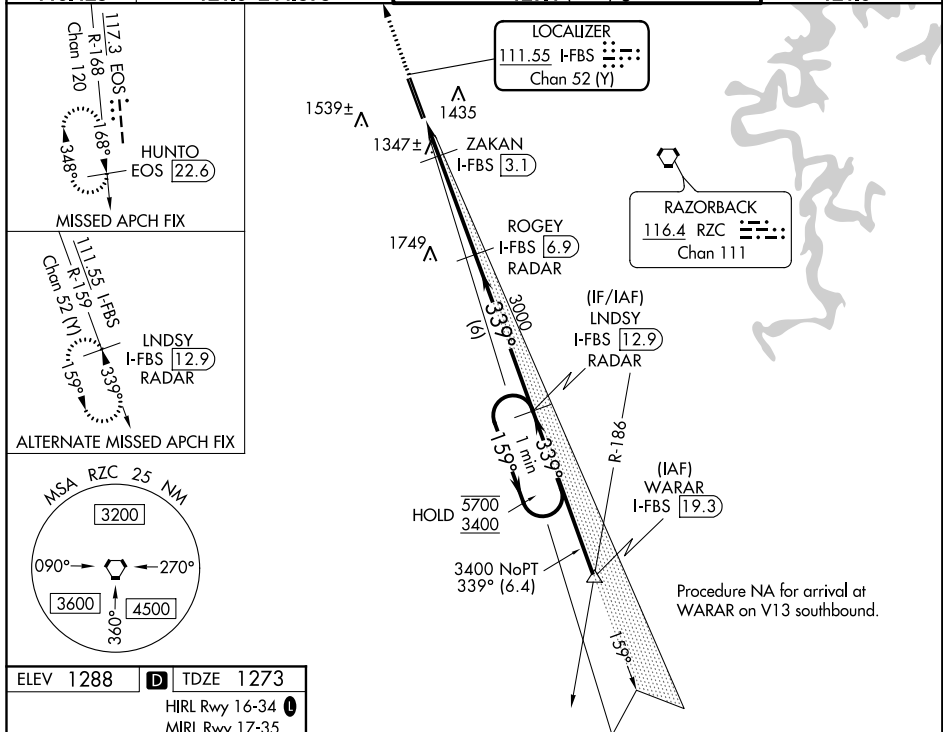


ILS or LOC RWY 34  
NORTHWEST ARKANSAS NATIONAL (XNA)

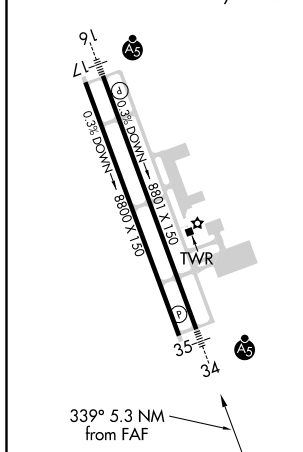
MALSR

**MISSED APPROACH:** Climb to 3400 on heading 339° and EOS VOR/DME R-168 to HUNTO/EOS VOR/DME 22.6 DME and hold.

NSAS NATIONAL TOWER★ 1 (CTAF) 0	GND CON 121.9
------------------------------------	------------------



ELEV 1288	<b>D</b>	TDZE 1273
HIRL Rwy 16-34 <b>L</b>		
MIRL Rwy 17-35		



3400 ↑ hdg 339°	EOS R-168	HUNTO EOS 22.6	ROGEY I-FBS 6.9 RADAR	LND SY I-FBS 12.9 RADAR	One Minute Holding Pattern
*LOC only.					
		ZAKAN I-FBS 2.5	3000	339°	159° → 5700 ← 339° 3400
		I-FBS 1.6	*1800		
			3000		
	0.9	0.6 NM	3.8 NM	6 NM	
					GS 3.00° TCH 58
CATEGORY	A	B	C	D	E
S-ILS 34 #	1473/24 200 (200-½)				
S-LOC 34	1600/24	327 (400-½)	1600/26 327 (400-½)		
CIRCLING	1740-1 452 (500-1)	1760-1 472 (500-1)	2040-2½ 752 (800-2½)	2080-2½ 792 (800-2½)	2080-2¾ 792 (800-2¾)