

APP CRS
354°

Rwy Idg
TDZE
Apt Elev

4006
527
527

RNAV (GPS) RWY 35
SALLISAW MUNI (JSV)

T

NA

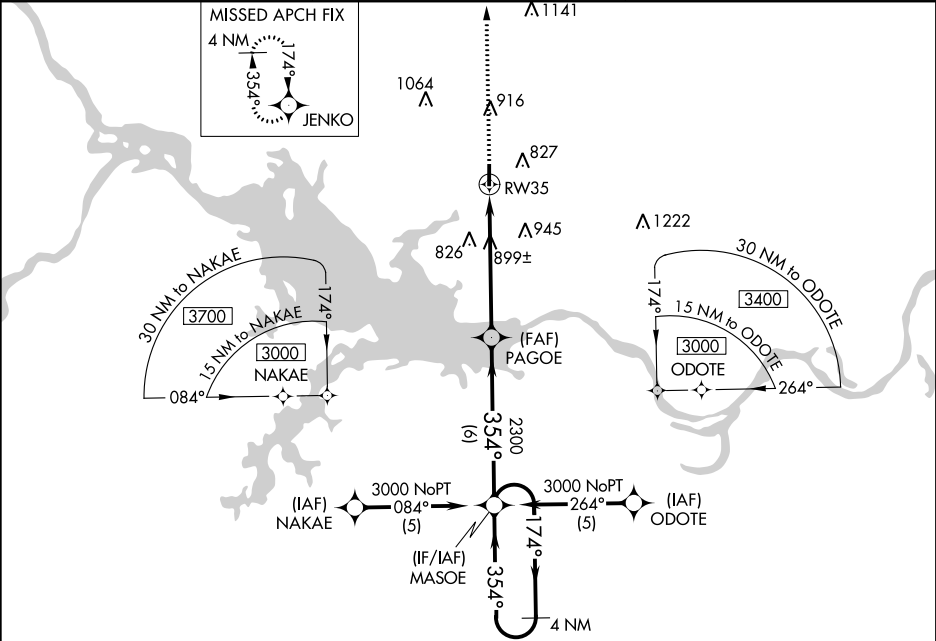
DME/DME RNP-0.3 NA. Night landing: Rwy 17 NA.
Helicopter visibility reduction below ¾ SM NA.

MISSED APPROACH: Climb to 3100
direct JENKO WP and hold.

AWOS-3
118.475

RAZORBACK APP CON ★
120.9 343.75

UNICOM
122.7 (CTAF)



ELEV 527

TDZE 527

MIRL Rwy 17-35

084°

264°

MASOE

3000

4100

30 NM to MASOE

3100

JENKO

PAGOE

RW35

3.00° TCH 40

354°

174°

3000

2300

5.5 NM

6 NM

MASOE

4 NM Holding Pattern

VGSI and descent angles not coincident (VGSI Angle 3.00/TCH 40).

CATEGORY	A	B	C	D
LNAV MDA	1160-1 633 (700-1)		1160-1¾ 633 (700-1¾)	NA
CIRCLING	1160-1 633 (700-1)		1160-1¾ 633 (700-1¾)	NA