

WAAS CH 61119 W35A	APP CRS 354°	Rwy Idg 3501 TDZE 1026 Apt Elev 1030
--	------------------------	---

RNAV (GPS) RWY 35
BLACKWELL-TONKAWA MUNI (BKN)

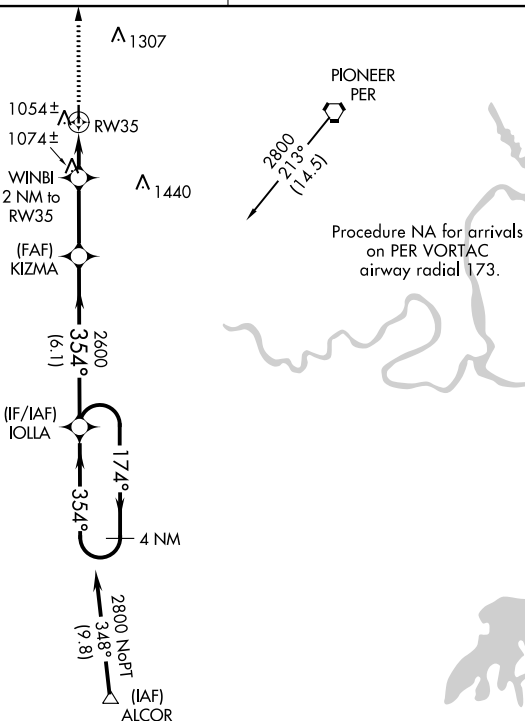
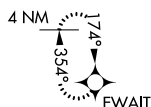
RNP APCH.

T For uncompensated Baro-VNAV systems, LNAV/VNAV NA below -17°C or above 54°C. When local altimeter setting not received, use Ponca City altimeter setting and increase all DA 31 feet and all MDA 40 feet and LNAV/VNAV all Cats visibility ¼ mile. Baro-VNAV and VDP NA when using Ponca City altimeter setting.

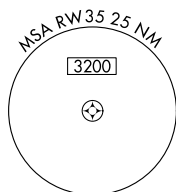
MISSED APPROACH: Climb to 2800 direct **EWAIT** and hold.

AWOS-3 120.575	KANSAS CITY CENTER 127.8 319.1	UNICOM 122.8 (CTAF) 0
--------------------------	--	---------------------------------

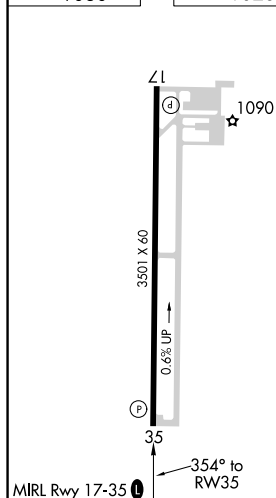
MISSED APCH FIX



Procedure NA for arrivals
on PER VORTAC
airway radial 173.

2109_A

ELEV 1030		TDZE 1026
-----------	--	-----------

[illegible]

CATEGORY	A	B	C	D
LPV DA	1276-1	250 (300-1)		NA
LNAV/ VNAV DA	1324-1	298 (300-1)		NA
LNAV MDA	1340-1	314 (400-1)		NA